

OUR PRODUCTS

Living food™

PROBIOTICS IN LIQUID

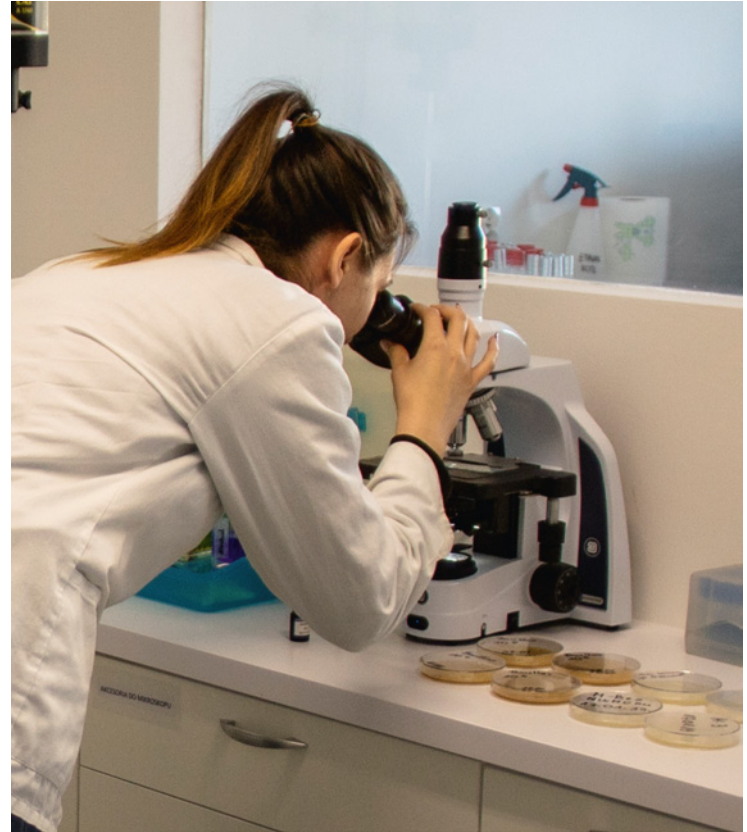
probiotic drinks | probiotic concentrates | probiotic supplements

Who we are?

Living Food company was registered on February 11, 2010 and since the beginning of its activity specializes in the production of probiotic foods. The production was started with the assortment of milk-free concentrates and Joy Day probiotic drinks, and thus far the company implemented a several dozen of probiotic food preparations and probiotic food supplements.

Living Food is one of the few companies in the European Union producing ecological, probiotic food products and probiotic food supplements in a liquid form, containing live and active probiotic bacteria, capable of immediately settling the digestive tract (mainly the gut). Excellent results are obtained thanks to the appropriate commitment of the crew and an innovative, cascade method of breeding specially selected sets of probiotic bacteria and the presence of their biofunctional postbiotics.

The entire production system and product control are based on the procedures in force in the implemented GMP, GHP and HACCP systems. Qualified and proven staff supervise the correctness of the system and quality of production.



PL - EKO - 09
EU Agriculture



Product rewarded by
The prof. Rejga Foundation
of Cardiac Surgery
Development
in Zabrze, Poland



Consumer Laurel
Discovery 2020



The Polish Award
of Innovation 2018



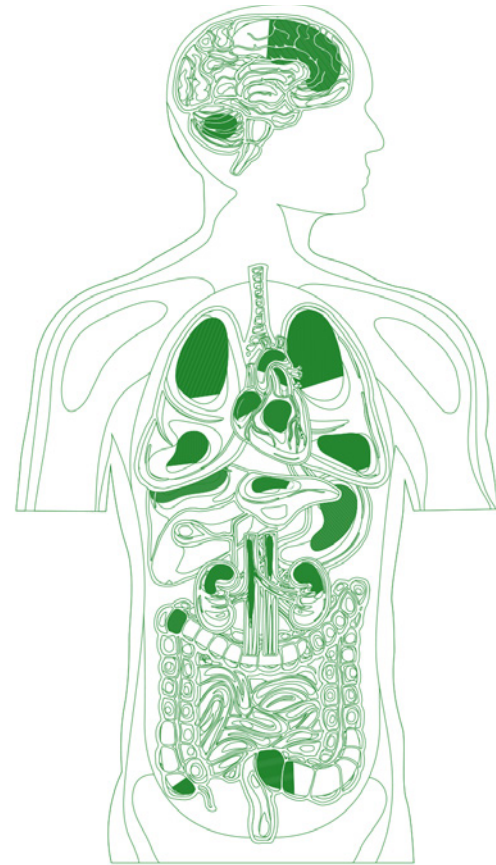
Polish Quality
Award

What are the probiotics and why do we need them?

Probiotics (according to the definition of FAO / WHO) are living microorganisms, which, if given in sufficient quantity, exert a beneficial effect on health, proved by clinical research.

Life in constant motion, stress or poor eating habits are conducive to dysfunctions of the body's work and the emergence of many diseases. Probiotics support the action of intestinal microbiota and have beneficial effects on the host organism, therefore their regular consumption in the company of changing the eating habits and lifestyle, effectively affects the prevention of many diseases, and in specific cases, to support their treatment.

The source of probiotics may be medicinal products, food supplements and functional foods. Liquid food products are the most natural and beneficial form of applying the helpful bacteria for our bodies.

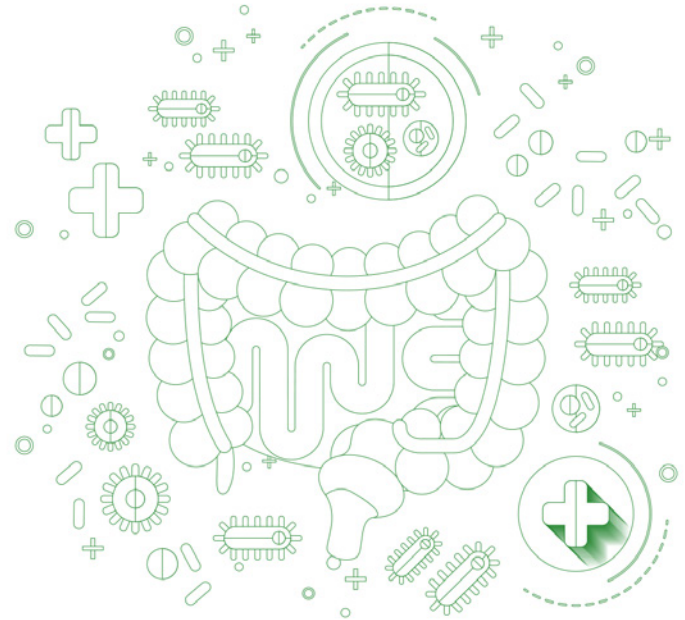


What effects probiotics have?

Probiotics support the proper growth of intestinal microbiota and have a positive effect on the human body. Regular probiotics consumption prevents many diseases effectively, and also in specific cases supports their treatment.

Probiotics have a direct impact on:

- maintaining the intestinal microbiological balance, also after antibiotic therapy,
- supporting the treatment of diarrhea,
- regulation of the digestive tract,
- supporting the immune system,
- maintaining a psychophysical balance.



Living Food™

BETTER IN LIQUID! Living Food ADVANTAGES

There are several reasons to choose probiotics in liquid form:

- they contain live and active non-lyophilized bacteria that enter the body in its original form, without the need for technological treatment and the use of protective substances, such as: glycerol, maltodextrins, or powdered milk.
- bacteria exhibit a high adhesiveness to intestinal epithelium and multiplication, as well as significant stability in the stressful environment of the stomach and the initial small intestine.
- there are biofunctional and bioactive postbiotics in the liquid, produced by probiotic microorganisms during a long-term breeding process.

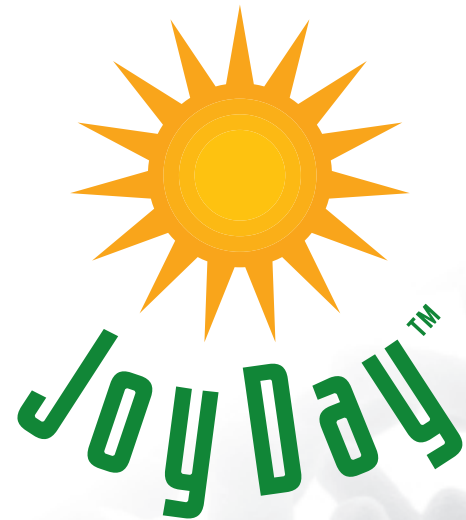


Joy Day probiotic – prevention and supplementation

Joy Day probiotic concentrates and drinks are recommended for consumption as part of the daily diet. They contain an innovative combination of specially selected sets of probiotic bacterial strains along with their biofunctional postbiotics and extracts from fermented plants additives.

Food supplements Probiotic JOY DAY and Probiotic JOY DAY Kids are recommended in supplementation aimed at rebuilding the composition of the gut microbiome, especially in states dysbiosis and after the use of antibiotics. They contain biofunctional postbiotics produced by strains of probiotic bacteria, incl. organic acids and vitamins.

The PREMIUM series Curcuma, ginger, pepper and Ashwagandha are food supplements that combine both a high number of probiotic bacteria and extracts from fermented plant ingredients, which are very rich in bioactive ingredients supporting the proper functioning of the body.



PROBIOSIP FOREST FRUITS

probiotic drink Joy Day

Volume: 125 ml

Portions: 1

Shelf life: 12 months

Consume within 48 hours of opening



TASTE:

Forest fruits | Forest fruits - SWEET

EFFECT:

It contains blackberry, blackcurrant and wild strawberry extract, with favorable immune enhancing properties, used in states of increased morbidity.

BENEFITS:

- 400 million probiotic bacteria in a daily portion.
- Positive effect on the microbiological balance of the intestines.
- Supplementing the diet with bioactive ingredients contained in the extract of blackberries, blackcurrant and wild strawberries.
- Convenient packaging, a concentrated daily portion of a ready-to-drink beverage that does not require portioning or dilution.

INGREDIENTS:

Water, apple juice (20%), extract from fermented herbal plants and fruits (8%) [including: blackcurrant leaves (16.7%), blackberry leaves (16.7%), wild strawberry leaves (16.7%), horsetail herb (16.7%), blackcurrant fruit (16.6%), blackberry fruit (16.6%)], a set of live and active probiotic bacterial strains (min. 3.2×10^6 cfu/ml). A product was produced in a cascade fermentation process of plant components with live, active strains of probiotic bacteria, including: *Lactobacillus rhamnosus* GG, *L. rhamnosus* LR 04, *L. rhamnosus* LR 05, *L. acidophilus* LA 1, *L. delbrueckii* ssp. *bulgaricus* LB 2, *L. casei* 101/37, *L. plantarum* LP 02, *L. plantarum* LP 01, *L. fermentum* LF2, *Bifidobacterium breve* Bl 10, *B. breve* Bbr 8, *B. longum* Bl 03, *B. animalis* ssp. *lactis* Bi 1, *Streptococcus thermophilus* Z 57, *S. thermophilus* 9 Y.

Forest fruits - SWEET contains steviol glycosides RA98%.

WHEN TO USE:

- probiotic prevention
- lowered immunity

RECOMMENDED DAILY INTAKE:

- 125 ml | for the main meal

NUTRITIONAL VALUE:

	per 100 ml	per serving 125 ml
energy	36 kJ/8 kcal	45 kJ/10 kcal
fat	0 g	0 g
of which saturated fatty acids	0 g	0 g
carbohydrate	2.1 g	2.6 g
of which sugars	0 g	0 g
fibre	0 g	0 g
protein	0 g	0 g
salt	0.02 g	0.03 g

LOGISTICS PARAMETERS:

FOREST FRUITS	FOREST FRUITS SWEET	
bottle depth /width /height [mm]		45/45/127
size in weight [ml]		125
a kind of packet		case
pcs / case		6
case / pallet		803
cases / layer on pallet		73
layer / pallet		11
pallet height [cm]		160

PROBIOSIP MINT

probiotic drink Joy Day

Volume: 125 ml

Portions: 1

Shelf life: 12 months

Consume within 48 hours of opening



TASTE:

Mint | Mint - SWEET

EFFECT:

It contains a mint extract, attributed to beneficial antispasmodic properties, used to relieve the symptoms of indigestion.

BENEFITS:

- 400 million probiotic bacteria in a daily portion.
- Positive effect on the microbiological balance of the intestines.
- Supplementing the diet with bioactive ingredients contained in the mint extract.
- Convenient packaging, a concentrated daily portion of a ready-to-drink beverage that does not require portioning or dilution.

INGREDIENTS:

Water, apple juice (20%), extract from fermented herbal plants and fruits (8%) [including: mint leaves (23.4%), elder flowers (20%), hawthorn flowers (16.6%), melissa leaves (16.6%), linden flowers (13.4%), horsetail herb (10%)], a set of live and active strains of probiotic bacteria (min. 3.2×10^6 cfu/ml). A product was produced in a cascade fermentation process of plant components with live, active strains of probiotic bacteria, including: *Lactobacillus rhamnosus* GG, *L. rhamnosus* LR 04, *L. rhamnosus* LR 05, *L. acidophilus* LA 1, *L. delbrueckii* ssp. *bulgaricus* LB 2, *L. casei* 101/37, *L. plantarum* LP 02, *L. plantarum* LP 01, *L. fermentum* LF2, *Bifidobacterium breve* BL 10, *B. breve* Bbr 8, *B. longum* BL 03, *B. animalis* ssp. *lactis* Bi 1, *Streptococcus thermophilus* Z 57, *S. thermophilus* 9 Y. Mint - SWEET drink contains steviol glycosides RA98%.

WHEN TO USE:

- probiotic prevention
- gastrointestinal disorders

RECOMMENDED DAILY INTAKE:

- 125 ml | for the main meal

NUTRITIONAL VALUE:

	per 100 ml	per serving 125 ml
energy	29 kJ/7 kcal	36 kJ/9 kcal
fat	0 g	0 g
of which saturated fatty acids	0 g	0 g
carbohydrate	1.7 g	2.1 g
of which sugars	0 g	0 g
fibre	0 g	0 g
protein	0 g	0 g
salt	0.02 g	0.03 g

LOGISTICS PARAMETERS:

MINT MINT SWEET	
bottle depth /width /height [mm]	45/45/127
size in weight [ml]	125
a kind of packet	case
pcs / case	6
case / pallet	803
cases / layer on pallet	73
layer / pallet	11
pallet height [cm]	160

FOREST FRUITS – CONCENTRATE

of probiotic drink Joy Day

Volume: 500 ml

Portions: 50

Shelf life: 12 months

Consume within 30 days of opening



TASTE:

Forest fruits

EFFECT:

It contains an extract of fermented plant ingredients, including blackberry, blackcurrant and wild strawberry extract, with favorable immune enhancing properties, used in states of increased morbidity.

BENEFITS:

- 600 million probiotic bacteria in a daily portion.
- Positive effect on the microbiological balance of the intestines.
- Supplementing the diet with bioactive ingredients contained in the extract of blackberries, blackcurrant and wild strawberries.
- Convenient dosage, daily portion concentrated in a small amount of liquid.

INGREDIENTS:

A set of live and active strains of probiotic bacteria (min. 2×10^7 cfu/ml), an extract from fermented herbal plants and fruits (20%) [including: blackcurrant leaves (16.7%), blackberry leaves (16.7%), wild strawberry leaves (16.7%), horsetail herb (16.7%), blackcurrant fruit (16.6%), blackberry fruit (16.6%)]. A product was produced in a cascade fermentation process of plant components with live, active strains of probiotic bacteria, including: *Lactobacillus rhamnosus* GG, *L. rhamnosus* LR 04, *L. rhamnosus* LR 05, *L. acidophilus* LA 1, *L. delbrueckii* ssp. *bulgaricus* LB 2, *L. casei* 101/37, *L. plantarum* LP 02, *L. plantarum* LP 01, *L. fermentum* LF2, *Bifidobacterium breve* BL 10, *B. breve* Bbr 8, *B. longum* BL 03, *B. animalis* ssp. *lactis* Bi 1, *Streptococcus thermophilus* Z 57, *S. thermophilus* 9 Y.

WHEN TO USE:

- probiotic prevention
- lowered immunity

RECOMMENDED DAILY INTAKE:

- adults 10 - 15 ml | 3 x times a day with meals
- children > 3 years | 5 ml | 3 x times a day with meals

NUTRITIONAL VALUE:

	per 100 ml	per serving 10 ml
energy	82 kJ/19 kcal	8 kJ/2 kcal
fat	0 g	0 g
of which saturated fatty acids	0 g	0 g
carbohydrate	4,2 g	< 0,5 g
of which sugars	< 0,5 g	0 g
fibre	< 0,5 g	0 g
protein	< 0,5 g	0 g
salt	< 0,01 g	0 g

LOGISTICS PARAMETERS:

FOREST FRUITS	
bottle depth /width /height [mm]	70/70/181
size in weight [ml]	500
a kind of packet	case
pcs / case	6
case / pallet	248
cases / layer on pallet	31
layer / pallet	8
pallet height [cm]	160

MINT – CONCENTRATE

of probiotic drink Joy Day

Volume: 500 ml

Portions: 50

Shelf life: 12 months

Consume within 30 days of opening



TASTE:

Mint

EFFECT:

It contains an extract of fermented plant ingredients with a dominance of mint, with attributed beneficial properties antispasmodics, used to relieve symptoms of indigestion.

BENEFITS:

- 600 million probiotic bacteria in a daily portion.
- Positive effect on the microbiological balance of the intestines.
- Supplementing the diet with bioactive ingredients contained in the mint extract.
- Convenient dosage, daily portion concentrated in a small amount of liquid.

INGREDIENTS:

A set of live and active strains of probiotic bacteria (min. 2×10^7 cfu/ml), an extract from fermented herbal plants (20%) [including: mint leaves (23.3%), elder flowers (20%), hawthorn flowers (16.7%), melissa leaves (16.7%), linden flowers (13.3%), horsetail herb (10%)]. A product was produced in a cascade fermentation process of plant components with live, active strains of probiotic bacteria, including: *Lactobacillus rhamnosus* GG, *L. rhamnosus* LR 04, *L. rhamnosus* LR 05, *L. acidophilus* LA 1, *L. delbrueckii* ssp. *bulgaricus* LB 2, *L. casei* 101/37, *L. plantarum* LP 02, *L. plantarum* LP 01, *L. fermentum* LF2, *Bifidobacterium breve* Bl 10, *B. breve* Bbr 8, *B. longum* BL 03, *B. animalis* ssp. *lactis* Bi 1, *Streptococcus thermophilus* Z 57, *S. thermophilus* 9 Y.

WHEN TO USE:

- probiotic prevention
- indigestion

RECOMMENDED DAILY INTAKE:

- adults 10 - 15 ml | 3 x times a day with meals
- children > 3 years | 5 ml | 3 x times a day with meals

NUTRITIONAL VALUE:

	per 100 ml	per serving 10 ml
energy	84 kJ/20 kcal	8 kJ/2 kcal
fat	0 g	0 g
of which saturated fatty acids	0 g	0 g
carbohydrate	4.2 g	< 0.5 g
of which sugars	< 0.5 g	0 g
fibre	< 0.5 g	0 g
protein	0.7 g	0 g
salt	0.02 g	0 g

LOGISTICS PARAMETERS:

MINT	
bottle depth /width /height [mm]	70/70/181
size in weight [ml]	500
a kind of packet	case
pcs / case	6
case / pallet	248
cases / layer on pallet	31
layer / pallet	8
pallet height [cm]	160

HAWTHORN – CONCENTRATE

of probiotic drink Joy Day

Volume: 500 ml

Portions: 50

Shelf life: 12 months

Consume within 30 days of opening



TASTE:

Hawthorn

EFFECT:

It contains an extract of fermented plant ingredients with a dominance of hawthorn, with attributed beneficial properties protective for the circulatory system, used for prophylactic purposes.

BENEFITS:

- 600 million probiotic bacteria in a daily portion.
- Positive effect on the microbiological balance of the intestines.
- Supplementing the diet with bioactive components contained in the hawthorn extract.
- Convenient dosage, daily portion concentrated in a small amount of liquid.

INGREDIENTS:

A set of live and active strains of probiotic bacteria (min. 2×10^7 cfu/ml), extract of fermented herbal plants (20%) [including: hawthorn berries (23.3%), hawthorn flowers (20%), lemon balm leaves (16.7%), St. John's wort (16.7%), linden flowers (13.3%), horsetail herb (10%)]. A product was produced in a cascade fermentation process of plant components with live, active strains of probiotic bacteria, including: *Lactobacillus rhamnosus* GG, *L. rhamnosus* LR 04, *L. rhamnosus* LR 05, *L. acidophilus* LA 1, *L. delbrueckii* ssp. *bulgaricus* LB 2, *L. casei* 101/37, *L. plantarum* LP 02, *L. plantarum* LP 01, *L. fermentum* LF2, *Bifidobacterium breve* BL 10, *B. breve* Bbr 8, *B. longum* BL 03, *B. animalis* ssp. *lactis* Bi 1, *Streptococcus thermophilus* Z 57, *S. thermophilus* 9 Y.

WHEN TO USE:

- probiotic prevention
- protection of the blood system

RECOMMENDED DAILY INTAKE:

- adults 10 - 15 ml | 3 x times a day with meals
- children > 3 years | 5 ml | 3 x times a day with meals

NUTRITIONAL VALUE:

	per 100 ml	per serving 10 ml
energy	82 kJ/19 kcal	8 kJ/2 kcal
fat	0 g	0 g
of which saturated fatty acids	0 g	0 g
carbohydrate	4.0 g	< 0.5 g
of which sugars	< 0.5 g	0 g
fibre	< 0.5 g	0 g
protein	0.7 g	0 g
salt	0.02 g	0 g

LOGISTICS PARAMETERS:

HAWTHORN	
bottle depth /width /height [mm]	70/70/181
size in weight [ml]	500
a kind of packet	case
pcs / case	6
case / pallet	248
cases / layer on pallet	31
layer / pallet	8
pallet height [cm]	160

HOP – CONCENTRATE

of probiotic drink Joy Day

Volume: 500 ml

Portions: 50

Shelf life: 12 months

Consume within 30 days of opening



TASTE:

Hop

EFFECT:

It contains an extract of fermented plant ingredients with a dominance of hops, with attributed beneficial properties gently calming, especially in states of increased nervous tension.

BENEFITS:

- 600 million probiotic bacteria in a daily portion.
- Positive effect on the microbiological balance of the intestines.
- Supplementing the diet with bioactive components contained in the hops extract.
- Convenient dosage, daily portion concentrated in a small amount of liquid.

INGREDIENTS:

A set of live and active strains of probiotic bacteria (min. 2×10^7 cfu/ml), extract of fermented herbal plants (20%) [including: hop flowers (23.3%), elderberry flowers (20%), hawthorn flowers (16.7%), lemon balm leaves (16.7%), linden flowers (13.3%), horsetail herb (10%)]. A product was produced in a cascade fermentation process of plant components with live, active strains of probiotic bacteria, including: *Lactobacillus rhamnosus* GG, *L. rhamnosus* LR 04, *L. rhamnosus* LR 05, *L. acidophilus* LA 1, *L. delbrueckii* ssp. *bulgaricus* LB 2, *L. casei* 101/37, *L. plantarum* LP 02, *L. plantarum* LP 01, *L. fermentum* LF2, *Bifidobacterium breve* BL 10, *B. breve* Bbr 8, *B. longum* BL 03, *B. animalis* ssp. *lactis* Bi 1, *Streptococcus thermophilus* Z 57, *S. thermophilus* 9 Y.

WHEN TO USE:

- probiotic prevention
- increased nervous tension

RECOMMENDED DAILY INTAKE:

- adults 10 - 15 ml | 3 x times a day with meals
- children > 3 years | 5 ml | 3 x times a day with meals

NUTRITIONAL VALUE:

	per 100 ml	per serving 10 ml
energy	84 kJ/20 kcal	8 kJ/2 kcal
fat	0 g	0 g
of which saturated fatty acids	0 g	0 g
carbohydrate	4.2 g	< 0.5 g
of which sugars	< 0.5 g	0 g
fibre	< 0.5 g	0 g
protein	0.7 g	0 g
salt	0.02 g	0 g

LOGISTICS PARAMETERS:

HOP	
bottle depth /width /height [mm]	70/70/181
size in weight [ml]	500
a kind of packet	case
pcs / case	6
case / pallet	248
cases / layer on pallet	31
layer / pallet	8
pallet height [cm]	160

TOPINAMBUR – CONCENTRATE

of probiotic drink Joy Day

Volume: 500 ml

Portions: 50

Shelf life: 12 months

Consume within 30 days of opening



TASTE:

Topinambur

EFFECT:

It contains an extract of fermented plant ingredients with a dominance of topinambur, with ascribed beneficial prebiotic properties, used as an auxiliary to maintain the microbiological balance of the intestines.

BENEFITS:

- 600 million probiotic bacteria in a daily portion.
- Positive effect on the microbiological balance of the intestines.
- Supplementing the diet with bioactive components contained in the topinambur extract.
- Convenient dosage, daily portion concentrated in a small amount of liquid.

INGREDIENTS:

A set of live and active strains of probiotic bacteria (min. 2×10^7 cfu/ml), an extract from fermented vegetables (20%) [including: topinambur tubers (60%), carrot roots (16.6%), parsnip roots (16.6%), parsley roots and leaves (6.8%)]. A product was produced in a cascade fermentation process of plant components with live, active strains of probiotic bacteria, including: *Lactobacillus rhamnosus* GG, *L. rhamnosus* LR 04, *L. rhamnosus* LR 05, *L. acidophilus* LA 1, *L. delbrueckii* ssp. *bulgaricus* LB 2, *L. casei* 101/37, *L. plantarum* LP 02, *L. plantarum* LP 01, *L. fermentum* LF2, *Bifidobacterium breve* BL 10, *B. breve* Bbr 8, *B. longum* BL 03, *B. animalis* ssp. *lactis* Bi 1, *Streptococcus thermophilus* Z 57, *S. thermophilus* 9 Y.

WHEN TO USE:

- probiotic prevention
- digestive tract disorder

RECOMMENDED DAILY INTAKE:

- adults 10 - 15 ml | 3 x times a day with meals
- children > 3 years | 5 ml | 3 x times a day with meals

NUTRITIONAL VALUE:

	per 100 ml	per serving 10 ml
energy	72 kJ/17 kcal	7 kJ/2 kcal
fat	0 g	0 g
of which saturated fatty acids	0 g	0 g
carbohydrate	3.8 g	< 0.5 g
of which sugars	< 0.5 g	0 g
fibre	< 0.5 g	0 g
protein	< 0.5 g	0 g
salt	< 0.01 g	0 g

LOGISTICS PARAMETERS:

TOPINAMBUR	
bottle depth /width/height [mm]	70/70/181
size in weight [ml]	500
a kind of packet	case
pcs / case	6
case / pallet	248
cases / layer on pallet	31
layer / pallet	8
pallet height [cm]	160

PROBIOTIC Joy Day

food supplement

Volume: 500 ml

Portions: 50

Shelf life: 12 months

Consume within 30 days of opening



EFFECT:

Recommended for consumption to rebuild the intestinal microbiome after the use of antibiotics, in leaky intestines and to support the body's immunity. Probiotic supplementation helps restore the intestinal microbial balance.

BENEFITS:

- 1.8 billion probiotic bacteria in a daily portion.
- Restoration of the intestinal microbial balance.
- Supplementing bioactive postbiotics of probiotic bacteria.
- Convenient dosage, daily portion concentrated in a small amount of liquid.

INGREDIENTS:

A set of live and active strains of probiotic bacteria in liquid form (min. 6×10^7 cfu/ml). A product was produced in a cascade fermentation process of live and active probiotic bacteria, including: *Lactobacillus rhamnosus* GG (ATCC 53103), *L. rhamnosus* LR 04 (DSM 16605), *L. rhamnosus* ATB-LRS905 (LMG 25626), *L. acidophilus* LA 02 (DSM 21717), *L. plantarum* LP 09 (DSM 25710), *L. plantarum* ATB-LPM907 (LMG 26655), *L. paracasei* LPC 00 (LMG P-21380), *Bifidobacterium breve* BR 03 (DSM 16604), *B. breve* ATB-BBE804 (LMG 13208), *B. animalis* ssp. *lactis* BS 01 (LMG P-21384), *B. longum* ATB-BLM802 (LMG 26652), *Streptococcus thermophilus* FP 4 (DSM 18616).

WHEN TO USE:

- probiotic supplementation
- antibiotic therapy
- dysbiosis

RECOMMENDED DAILY INTAKE:

- adults 10 - 15 ml | 3 x times a day with meals
- children > 3 years | 5 ml | 3 x times a day with meals

NUTRITIONAL VALUE:

	per 100 ml	per serving 10 ml
energy	82 kJ/19 kcal	8 kJ/2 kcal
fat	0 g	0 g
of which saturated fatty acids	0 g	0 g
carbohydrate	4.2 g	< 0.5 g
of which sugars	< 0.5 g	0 g
fibre	< 0.5 g	0 g
protein	< 0.5 g	0 g
salt	< 0.01 g	0 g

LOGISTICS PARAMETERS:

PROBIOTIC JOY DAY	
bottle depth /width /height [mm]	74,5/74,5/162
size in weight [ml]	500
a kind of packet	case
pcs / case	6
case / pallet	200
cases / layer on pallet	25
layer / pallet	8
pallet height [cm]	160

PROBIOTIC JOY DAY KIDS

food supplement

Volume: 300 ml

Portions: 60

Shelf life: 12 months

Consume within 30 days of opening



EFFECT:

Liquid probiotic for children from 3 to 12 years of age. Recommended for consumption to rebuild the intestinal microbiome after the use of antibiotics, in leaky intestines and to support the body's immunity. Probiotic supplementation helps restore the intestinal microbial balance.

BENEFITS:

- 900 million probiotic bacteria in a daily portion.
- Restoration of the intestinal microbial balance.
- Supplementing bioactive postbiotics of probiotic bacteria.
- The liquid form makes it easier for children to swallow.
- Convenient dosage, daily portion concentrated in a small amount of liquid.

INGREDIENTS:

A set of live and active strains of probiotic bacteria in liquid form (min. 6×10^7 cfu/ml). A product was produced in a cascade fermentation process of live and active probiotic bacteria, including: *Lactobacillus plantarum* LP01 (LMG P-21021), *L. rhamnosus* LR06 (DSM 21981), *Bifidobacterium longum* 04 (DSM 23233), *B. lactis* BA05 (DSM 18352), *Streptococcus thermophilus* FP 4 (DSM 18616).

WHEN TO USE:

- probiotic supplementation
- antibiotic therapy
- dysbiosis

RECOMMENDED DAILY INTAKE:

- children > 3 years | 5-10 ml | 3 x times a day with meals

NUTRITIONAL VALUE:

	w 100 ml	w 5 ml
energy	82 kJ/19 kcal	4,1 kJ/1 kcal
fat	0 g	0 g
of which saturated fatty acids	0 g	0 g
carbohydrate	4,2 g	< 0,5 g
of which sugars	< 0,5 g	0 g
fibre	< 0,5 g	0 g
protein	< 0,5 g	0 g
salt	< 0,01 g	0 g

LOGISTICS PARAMETERS:

PROBIOTIC JOY DAY KIDS	
bottle depth /width/height [mm]	64/64/140
size in weight [ml]	300
a kind of packet	case
pcs / case	6
case / pallet	360
cases / layer on pallet	36
layer / pallet	10
pallet height [cm]	160

PROBIOSIP CURCUMA, GINGER, PEPPER

food supplement – shot Joy Day

PREMIUM

Volume: 125 ml

Portions: 1

Shelf life: 12 months

Consume within 48 hours of opening



TASTE:

Curcuma, ginger, pepper

EFFECT:

It contains curcuma root, ginger root and peppercorns extract, with favorable immune enhancing properties, used in states of increased morbidity.

BENEFITS:

- 400 million probiotic bacteria in a daily portion.
- Positive effect on the microbiological balance of the intestines.
- Supplementing the diet with bioactive ingredients contained in the extract of curcuma, ginger and pepper.
- Convenient packaging, a concentrated daily portion of ready-to-drink beverage that does not require portioning or dilution.

INGREDIENTS:

Water (60%), liquid blend of live and active probiotic bacteria cultures (min. 3.2×10^6 cfu/ml), extract from fermented plants (40%) [including: curcuma root (49%), ginger root (49%), peppercorns (2%)]. A product was produced in a cascade fermentation process of plant components with live, active strains of probiotic bacteria, including: *Lactobacillus rhamnosus* GG, *L. rhamnosus* LR 04, *L. rhamnosus* LR 05, *L. acidophilus* LA 1, *L. delbrueckii* ssp. *bulgaricus* LB 2, *L. casei* 101/37, *L. plantarum* LP 02, *L. plantarum* LP 01, *L. fermentum* LF2, *Bifidobacterium breve* Bl 10, *B. breve* Bbr 8, *B. longum* BL 03, *B. animalis* ssp. *lactis* Bi 1, *Streptococcus thermophilus* Z 57, *S. thermophilus* 9 Y.

WHEN TO USE:

- probiotic supplementation
- lowered immunity
- dysbiosis

RECOMMENDED DAILY INTAKE:

- 125 ml | for the main meal

NUTRITIONAL VALUE:

	per 100 ml	per serving 125 ml
energy	29 kJ/7 kcal	36 kJ/9 kcal
fat	0 g	0 g
of which saturated fatty acids	0 g	0 g
carbohydrate	1.7 g	2.1 g
of which sugars	0 g	0 g
fibre	0 g	0 g
protein	0 g	0 g
salt	0.02 g	0.03 g

LOGISTICS PARAMETERS:

PROBIOSIP CURCUMA, GINGER, PEPPER	
bottle depth /width /height [mm]	45/45/127
size in weight [ml]	125
a kind of packet	case
pcs / case	6
case / pallet	803
cases / layer on pallet	73
layer / pallet	11
pallet height [cm]	160

PROBIOTIC Joy Day CURCUMA, GINGER, PEPPER

food supplement – Joy Day

Volume: 500 ml

Portions: 50

Shelf life: 12 months

Consume within 30 days of opening

PREMIUM



TASTE:

Curcuma, ginger, pepper

EFFECT:

Recommended for use in probiotic supplementation in intestinal leakage, dysbiosis and to support the body's immunity. Probiotic supplementation helps restore the microbiological balance of the intestines.

BENEFITS:

- 1.2 billion probiotic bacteria in a daily portion.
- Restoration of the intestinal microbial balance.
- Supplementing the diet with bioactive ingredients contained in the extract of curcuma, ginger and pepper.
- Supplementing the diet with bioactive postbiotics of probiotic bacteria.
- Convenient dosage, daily portion concentrated in a small amount of liquid.

INGREDIENTS:

Liquid blend of live and active probiotic bacteria cultures (min. 4×10^7 cfu/ml), extract from fermented plants (40%) [including: curcuma root (49%), ginger root (49%), peppercorns (2%)]. A product was produced in a cascade fermentation process of plant components with live, active strains of probiotic bacteria, including: *Lactobacillus rhamnosus* GG, *L. rhamnosus* LR 04, *L. rhamnosus* LR 05, *L. acidophilus* LA 1, *L. delbrueckii* ssp. *bulgaricus* LB 2, *L. casei* 101/37, *L. plantarum* LP 02, *L. plantarum* LP 01, *L. fermentum* LF2, *Bifidobacterium breve* BL 10, *B. breve* Bbr 8, *B. longum* BL 03, *B. animalis* ssp. *lactis* Bi 1, *Streptococcus thermophilus* Z 57, *S. thermophilus* 9 Y.

WHEN TO USE:

- probiotic supplementation
- lowered immunity
- dysbiosis

RECOMMENDED DAILY INTAKE:

- adults 10 - 15 ml | 3 x times a day with meals
- children > 3 years | 5 ml | 3 x times a day with meals

NUTRITIONAL VALUE:

	per 100 ml	per serving 10 ml
energy	72 kJ/17 kcal	7 kJ/2 kcal
fat	0 g	0 g
of which saturated fatty acids	0 g	0 g
carbohydrate	3.8 g	< 0.5 g
of which sugars	< 0.5 g	0 g
fibre	< 0.5 g	0 g
protein	< 0.5 g	0 g
salt	< 0.01 g	0 g

LOGISTICS PARAMETERS:

PROBIOTIC CURCUMA, GINGER, PEPPER	
bottle depth /width /height [mm]	78.5/78.5/155
size in weight [ml]	500
a kind of packet	case
pcs / case	6
case / pallet	225
cases / layer on pallet	25
layer / pallet	9
pallet height [cm]	160

PROBIOTIC JOY DAY ASHWAGANDHA

food supplement – JOY DAY

Volume: 500 ml

Portions: 50

Shelf life: 12 months

Consume within 30 days of opening



PREMIUM

TASTE:

Ashwagandha

EFFECT:

Recommended for consumption in order to maintain psychophysical balance, as well as to support the beneficial effect of probiotic bacteria on the gut-brain axis. It is the perfect combination of probiotic bacteria and ASHWAGANDHA in the fight against stress. Probiotic supplementation helps restore the intestinal microbiological balance.

BENEFITS:

- 1.2 billion probiotic bacteria in a daily portion.
- Restoration of the intestinal microbial balance.
- Supplementing the diet with bioactive ingredients contained in the extract of ashwagandha.
- Supplementing the diet with bioactive postbiotics of probiotic bacteria.
- Convenient dosage, daily portion concentrated in a small amount of liquid.

INGREDIENTS:

A set of live and active strains of probiotic bacteria in liquid form (min. 4×10^7 cfu/ml), extract from fermented ashwagandha roots (40%). A product was produced in a cascade fermentation process of ashwagandha with live, active strains of probiotic bacteria, including: *Lactobacillus rhamnosus* GG, *L. rhamnosus* LR 04, *L. rhamnosus* LR 05, *L. acidophilus* LA 1, *L. delbrueckii* ssp. *bulgaricus* LB 2, *L. casei* 101/37, *L. plantarum* LP 02, *L. plantarum* LP 01, *L. fermentum* LF2, *Bifidobacterium breve* BL 10, *B. breve* Bbr 8, *B. longum* BL 03, *B. animalis* ssp. *lactis* Bi 1, *Streptococcus thermophilus* Z 57, *S. thermophilus* 9 Y.

WHEN TO USE:

- probiotic supplementation
- stress
- dysbiosis

RECOMMENDED DAILY INTAKE:

- adults 10 - 15 ml | 3 x times a day with meals

NUTRITIONAL VALUE:

	per 100 ml	per serving 10 ml
energy	72 kJ/17 kcal	7 kJ/2 kcal
fat	0 g	0 g
of which saturated fatty acids	0 g	0 g
carbohydrate	3.8 g	< 0.5 g
of which sugars	< 0.5 g	0 g
fibre	< 0.5 g	0 g
protein	< 0.5 g	0 g
salt	< 0.01 g	0 g

LOGISTICS PARAMETERS:

PROBIOTIC JOY DAY ASHWAGANDHA	
bottle depth /width /height [mm]	78.5/78.5/155
size in weight [ml]	500
a kind of packet	case
pcs / case	6
case / pallet	225
cases / layer on pallet	25
layer / pallet	9
pallet height [cm]	160

FORMULA Herbeauty Joy Day Probiotic supplementation

Formula Herbeauty Joy Day – they are food supplements, that were created with health and beauty in mind. Probiotic herbal extracts Joy Day with the Formula Herbeauty have been composed so that the richness of active ingredients contained in plant ingredients affect the maintenance of the proper functions of the body.

The synergy of plant ingredients with live and active probiotic bacteria enhances the bioavailability of bioactive ingredients contained in herbs and ensures better growth of probiotic bacteria.

The logo features a stylized sun icon above the text "Joy Day™".
Herbeauty

PROBIOSIP HORSETAIL & KNOTWEED

food supplement –
shot Herbeauty Joy Day

Volume: 125 ml

Portions: 1

Shelf life: 12 months

Consume within 48 hours of opening



TASTE:

Horsetail, knotweed

EFFECT:

It contains an extract of fermented herbal ingredients – horsetail (*Equisetum arvense*) and knotweed (*Polygonum aviculare*), whose bioactive ingredients, mainly organic silica, help maintain the proper condition of the SKIN, HAIR and NAILS.

BENEFITS:

- 400 million probiotic bacteria in a daily portion.
- 261 mg/L of easily absorbable organic silica derived from plant ingredients.
- Supplementing the diet with bioactive ingredients contained in the extract of horsetail and knotweed.
- Convenient packaging, a concentrated daily portion of ready-to-drink beverage that does not require portioning or dilution.

INGREDIENTS:

Water (60%), fermented herbal ingredients extract (25%) [including: herb of horsetail (60%), herb of knotweed (40%)], a set of live and active strains of probiotic bacteria in liquid form (15%). A product was produced in a cascade fermentation process of plant components with live, active probiotic bacteria, including: *Lactobacillus rhamnosus* GG, *L. rhamnosus* LR 04, *L. rhamnosus* LR 05, *L. acidophilus* LA 1, *L. delbrueckii* ssp. *bulgaricus* LB 2, *L. casei* 101/37, *L. plantarum* LP 02, *L. plantarum* LP 01, *L. fermentum* LF2, *Bifidobacterium breve* BL 10, *B. breve* Bbr 8, *B. longum* BL 03, *B. animalis* ssp. *lactis* Bi 1, *Streptococcus thermophilus* Z 57, *S. thermophilus* 9 Y.

WHEN TO USE:

- probiotic supplementation
- proper condition of skin, hair and nails
- dysbiosis

RECOMMENDED DAILY INTAKE:

- 125 ml | for the main meal

NUTRITIONAL VALUE:

	per 100 ml	per serving 125 ml
energy	29 kJ/7 kcal	36 kJ/9 kcal
fat	0 g	0 g
of which saturated fatty acids	0 g	0 g
carbohydrate	1.7 g	2.1 g
of which sugars	0 g	0 g
fibre	0 g	0 g
protein	0 g	0 g
salt	0.02 g	0.03 g

LOGISTICS PARAMETERS:

PROBIOSIP HORSETAIL & KNOTWEED	
bottle depth /width /height [mm]	45/45/127
size in weight [ml]	125
a kind of packet	case
pcs / case	6
case / pallet	803
cases / layer on pallet	73
layer / pallet	11
pallet height [cm]	160

PROBIOTIC HORSETAIL & KNOTWEED

food supplement –
Herbeauty Joy Day

Volume: 500 ml

Portions: 50

Shelf life: 12 miesięcy

Consume within 30 days of opening



TASTE:

Horsetail, knotweed

EFFECT:

It contains an extract of fermented herbal ingredients – horsetail (*Equisetum arvense*) and knotweed (*Polygonum aviculare*), whose bioactive ingredients, mainly organic silica, help maintain the proper condition of the SKIN, HAIR and NAILS.

BENEFITS:

- 400 million probiotic bacteria in a daily portion.
- 261 mg/L of easily absorbable organic silica derived from plant ingredients.
- Supplementing the diet with bioactive ingredients contained in the extract of horsetail and knotweed.
- Supplementing the diet with bioactive postbiotics of probiotic bacteria.
- Convenient dosage, daily portion concentrated in a small amount of liquid.

INGREDIENTS:

Fermented herbal ingredients extract (100%) [including: herb of horsetail (60%), herb of knotweed (40%), a set of live, active strains of probiotic bacteria in liquid form (min. 2×10^7 cfu/ml)]. A product was produced in a cascade fermentation process of plant components with live and active probiotic bacteria, including: *Lactobacillus rhamnosus* GG, *L. rhamnosus* LR 04, *L. rhamnosus* LR 05, *L. acidophilus* LA 1, *L. delbrueckii* ssp. *bulgaricus* LB 2, *L. casei* 101/37, *L. plantarum* LP 02, *L. plantarum* LP 01, *L. fermentum* LF2, *Bifidobacterium breve* BL 10, *B. breve* Bbr 8, *B. longum* BL 03, *B. animalis* ssp. *lactis* Bi 1, *Streptococcus thermophilus* Z 57, *S. thermophilus* 9 Y.

WHEN TO USE:

- probiotic supplementation
- proper condition of skin, hair and nails
- dysbiosis

RECOMMENDED DAILY INTAKE:

- adults 10-15 ml | 2 x times a day with meals
- children > 7 years | 5 ml | 2 x times a day with meals

NUTRITIONAL VALUE:

	per 100 ml	per serving 10 ml
energy	230 kJ/55 kcal	25 kJ/6 kcal
fat	0 g	0 g
of which saturated fatty acids	0 g	0 g
carbohydrate	11.4 g	<1.5 g
of which sugars	<1.5 g	0 g
fibre	<1.5 g	0 g
protein	<1.5 g	0 g
salt	0.03 g	0 g

LOGISTICS PARAMETERS:

PROBIOTIC HORSETAIL & KNOTWEED	
bottle depth /width /height [mm]	78,5/78,5/155
size in weight [ml]	500
a kind of packet	case
pcs / case	6
case / pallet	225
cases / layer on pallet	25
layer / pallet	9
pallet height [cm]	160

Joy Day Innovation AKG Formula probiotic supplementation

The innovative composition of specially selected strains of probiotic bacteria, plant additives and AKG (α -ketoglutaric acid) is a combination that gives maximum benefits for organism.

α -ketoglutaric acid occurs naturally in the body and has a direct influence on energy metabolism in cells. The daily diet does not contain AKG, but its precursors. The only source of this compound is synthesis by the intestinal microbiota or supplementation. Why did we combine AKG and probiotics? Microbiologically synthesized AKG supports the beneficial effects of probiotics, which significantly increase its bioavailability. This innovative recipe therefore enables the maximum use of the potential of the ingredients contained in the product.

The α -ketoglutaric acid (AKG) contained in the preparations of Living Food is obtained only in the microbiological way. It is an excellent, natural alternative to the most popular chemical synthesis of this compound.



The Polish Award of Innovation 2018

FORMULA
AKG
Livingfood™

PROBIOTIC WITH α-KETOGLUTARIC ACID

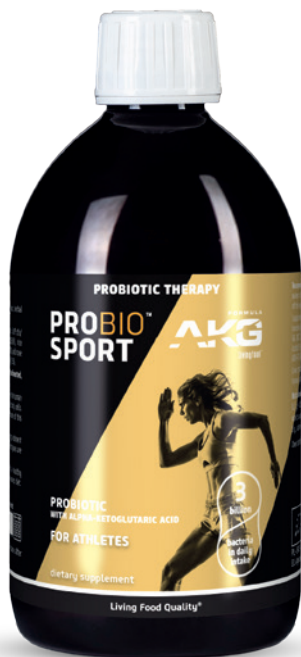
food supplement

Volume: 500 ml

Portions: 33

Shelf life: 12 months

Consume within 30 days of opening



PURPOSE:

for athletes

EFFECT:

Recommended in probiotic supplementation for physically active people. It contains beetroot extract and vegetable protein, which are attributed to the properties supporting exercise capacity.

BENEFITS:

- 3 billion probiotic bacteria in a daily portion.
- The daily dose provides 225 mg of α-ketoglutaric acid obtained naturally by microorganisms.
- Restoration of the intestinal microbial balance.
- Supplementing the diet with bioactive components contained in the extract of beetroot and vegetable protein.
- Comprehensive support of the body exposed to excessive physical and mental effort.

INGREDIENTS:

A set of live and active strains of probiotic bacteria in liquid form (min. 1×10^8 cfu/ml), extract from fermented plant materials (20%) [including: beetroot root (32.5%), rice protein (32.5%), **young barley seeds** (10%), nettle leaves (10%), ashwagandha root (10%), rosehip peel (5%)], alpha-ketoglutaric acid extracted naturally by microorganisms (0.75%). A product was produced in a cascade fermentation process of plant components with live, active strains of probiotic bacteria, including: *Lactobacillus rhamnosus* GG (ATCC 53103), *L. acidophilus* LA 02 (DSM 21717), *Bifidobacterium animalis* ssp. *lactis* BS 01 (LMG P-21384), *Streptococcus thermophilus* FP 4 (DSM 18616), *S. salivarius* sp. *thermophilus* LMG 21908 P.

WHEN TO USE:

- probiotic supplementation
- physical effort
- stress

RECOMMENDED DAILY INTAKE:

- adults | 15 ml | 2 x times a day with meals

NUTRITIONAL VALUE:

	per 100 ml	per serving 15 ml
energy	129 kJ/31 kcal	19 kJ/5 kcal
fat	0.2 g	< 0.05 g
of which saturated fatty acids	0 g	0 g
carbohydrate	6.4 g	1 g
of which sugars	< 0.05 g	0 g
fibre	0.3 g	< 0.05 g
protein	0.7 g	0.1 g
salt	< 0.01 g	0 g
α-ketoglutaric acid	750 mg	112.5 mg

LOGISTICS PARAMETERS:

AKG PROBIOTIC PROBIOSPORT	
bottle depth /width /height [mm]	74,5/74,5/162
size in weight [ml]	500
a kind of packet	case
pcs / case	6
case / pallet	200
cases / layer on pallet	25
layer / pallet	8
pallet height [cm]	160

PROBIOTIC WITH α-KETOGLUTARIC ACID

food supplement

Volume: 500 ml

Portions: 33

Shelf life: 12 months

Consume within 30 days of opening



PURPOSE:

after antibiotic therapy

EFFECT:

Recommended in probiotic supplementation for people who are during and after antibiotic therapy. It contains acerola fruit and topinambur flour. Used to reconstruct disorder due to the antibiotic therapy of intestinal microbiota and strengthening of immunity and protection against bacterial infections.

BENEFITS:

- 3 billion probiotic bacteria in a daily portion.
- The daily dose provides 225 mg of α-ketoglutaric acid obtained naturally by microorganisms.
- Restoration of the intestinal microbial balance.
- Supplementing the diet with bioactive ingredients contained in the acerola fruit and topinambur flour.
- Comprehensive support of the body during and after antibiotic therapy.

INGREDIENTS:

A set of live and active strains of probiotic bacteria in liquid form (min. 1×10^8 cfu/ml), extract from fermented plant materials (20%) [including: acerola fruit (35%), topinambur flour (20%), Lucuma root (15%), pomegranate seeds (10%), maitake (10%), ginger root (10%)], alpha-ketoglutaric acid obtained naturally by microorganisms (0.75%). A product was produced in a cascade fermentation process of plant components with live, active strains of probiotic bacteria, including: *Lactobacillus rhamnosus* GG (ATCC 53103), *L. acidophilus* LA O2 (DSM 21717), *L. helveticus* ATB-LHS906 (LMG 26307), *L. jensenii* KS121.1 (CNCM I-3219), *Bifidobacterium animalis* ssp. *lactis* BS 01 (LMG P-21384), *Streptococcus thermophilus* FP 4 (DSM 18616), *S. salivarius* sp. *thermophilus* LMG 21908 P.

WHEN TO USE:

- probiotic supplementation
- antibiotic therapy

RECOMMENDED DAILY INTAKE:

- adults | 15 ml | 2 x times a day with meals
- children >3 years | 5 ml | 3 x times a day with meals

NUTRITIONAL VALUE:

	per 100 ml	per serving 15 ml
energy	111 kJ/26 kcal	17 kJ/4 kcal
fat	0.2 g	< 0.05 g
of which saturated fatty acids	0 g	0 g
carbohydrate	5.2 g	0.8 g
of which sugars	< 0.05 g	0 g
fibre	0.4 g	0.1 g
protein	0.7 g	0.1 g
salt	0.01 g	0 g
α-ketoglutaric acid	750 mg	112.5 mg

LOGISTICS PARAMETERS:

AKG PROBIOTIC AFTER ANTIBIOTIC THERAPY	
bottle depth /width /height [mm]	74,5/74,5/162
size in weight [ml]	500
a kind of packet	case
pcs / case	6
case / pallet	200
cases / layer on pallet	25
layer / pallet	8
pallet height [cm]	160

PROBIOTIC WITH α-KETOGLUTARIC ACID

food supplement

Volume: 500 ml

Portions: 33

Shelf life: 12 months

Consume within 30 days of opening



PURPOSE:

for women

EFFECT:

Recommended in probiotic supplementation for women. Contains chokeberry fruit and red beet root. Used to increase the absorption of vitamins and minerals and to supplement iron and calcium losses in the prevention of anemia and osteoporosis.

BENEFITS:

- 3 billion probiotic bacteria in a daily portion.
- The daily dose provides 225 mg of α-ketoglutaric acid obtained naturally by microorganisms.
- Restoration of the intestinal microbial balance.
- Supplementing the diet with bioactive components contained in the extract from chokeberry fruit and red beet root.
- Comprehensive support of the female body in the prevention of anemia and osteoporosis.

INGREDIENTS:

A set of live and active strains of probiotic bacteria in liquid form (min. 1×10^8 cfu/ml), extract from fermented plant materials (20%) [including: chokeberry fruit (44%), beetroot root (22%), red lentil flour (22%), basil leaves (5%), coriander leaves (5%), vanilla root (2%)], alpha-ketoglutaric acid obtained naturally by microorganisms (0.75%). A product was produced in a cascade fermentation process of plant components with live, active strains of probiotic bacteria, including: *Lactobacillus rhamnosus* GG (ATCC 53103), *L. acidophilus* LA 02 (DSM 21717), *L. jensenii* KS121.1 (CNCM I-3219), *Bifidobacterium animalis* ssp. *lactis* BS 01 (LMG P-21384), *Streptococcus thermophilus* FP4 (DSM 18616).

WHEN TO USE:

- probiotic supplementation
- prevention of anemia
- prevention of osteoporosis

RECOMMENDED DAILY INTAKE:

- adults | 15 ml | 2 x times a day with meals

NUTRITIONAL VALUE:

	per 100 ml	per serving 15 ml
energy	128 kJ/30 kcal	19 kJ/5 kcal
fat	0.2 g	< 0.05 g
of which saturated fatty acids	0 g	0 g
carbohydrate	6.3 g	0.9 g
of which sugars	< 0.05 g	0 g
fibre	0.5 g	0.1 g
protein	0.6 g	0.1 g
salt	< 0.01 g	0 g
α-ketoglutaric acid	750 mg	112.5 mg

LOGISTICS PARAMETERS:

AKG PROBIOTIC FOR WOMEN	
bottle depth /width /height [mm]	74,5/74,5/162
size in weight [ml]	500
a kind of packet	case
pcs / case	6
case / pallet	200
cases / layer on pallet	25
layer / pallet	8
pallet height [cm]	160

PROBIOTIC WITH α-KETOGLUTARIC ACID

food supplement

Volume: 500 ml

Portions: 33

Shelf life: 12 months

Consume within 30 days of opening



PURPOSE:

after chemotherapy

EFFECT:

Recommended in probiotic supplementation for people during and after chemotherapy. It contains extract from nettle, beetroot and hemp protein. Used to support the regeneration of organism and immunity, to protect muscle tissue and to restore the intestinal microbial balance.

BENEFITS:

- 3 billion probiotic bacteria in a daily portion.
- The daily dose provides 225 mg of α-ketoglutaric acid obtained naturally by microorganisms.
- Restoration of the intestinal microbial balance.
- Supplementing the diet with bioactive components contained in the extract of nettle, beets and hemp protein.
- Comprehensive support of the body during and after chemotherapy.

INGREDIENTS:

A set of live and active strains of probiotic bacteria in liquid form (min. 1×10^8 cfu/ml), extract from fermented plant materials (20%) [including: nettle leaves (30%), beetroot root (20%), hemp protein (20%), young barley seeds (13%), lucuma root (12%), anise seeds (5%)], alpha-ketoglutaric acid obtained naturally by microorganisms (0.75%). A product was produced in a cascade fermentation process of plant components with live, active strains of probiotic bacteria, including: *Lactobacillus rhamnosus* GG (ATCC 53103), *L. acidophilus* LA 02 (DSM 21717), *L. helveticus* ATB-LHS906 (LMG 26307), *L. jensenii* KS121.1 (CNCM I-3219), *Bifidobacterium animalis* ssp. *lactis* BS 01 (LMG P-21384), *Streptococcus thermophilus* FP 4 (DSM 18616), *S. salivarius* sp. *thermophilus* LMG 21908 P.

WHEN TO USE:

- probiotic supplementation
- chemotherapy

RECOMMENDED DAILY INTAKE:

- adults | 15 ml | 2 x times a day with meals
- children >3 years | 5 ml | 3 x times a day with meals

NUTRITIONAL VALUE:

	per 100 ml	per serving 15 ml
energy	129 kJ/31 kcal	19 kJ/5 kcal
fat	0.3 g	0.05 g
of which saturated fatty acids	0 g	0 g
carbohydrate	6 g	0.9 g
of which sugars	< 0.05 g	0 g
fibre	0.3 g	0.1 g
protein	0.8 g	0.1 g
salt	0.01 g	0 g
α-ketoglutaric acid	750 mg	112.5 mg

LOGISTICS PARAMETERS:

AKG PROBIOTIC AFTER CHEMOTHERAPY	
bottle depth /width /height [mm]	74,5/74,5/162
size in weight [ml]	500
a kind of packet	case
pcs / case	6
case / pallet	200
cases / layer on pallet	25
layer / pallet	8
pallet height [cm]	160

PROBIOTIC WITH α-KETOGLUTARIC ACID

food supplement

Volume: 500 ml

Portions: 33

Shelf life: 12 months

Consume within 30 days of opening



PURPOSE:

for everyone

EFFECT:

Recommended to use in probiotic supplementation, especially in dysbiosis and weakness of the organism after and/or during the disease, supportively in the chronic digestive tract diseases treatment.

BENEFITS:

- 3 billion probiotic bacteria in a daily portion.
- The daily dose provides 225 mg of α-ketoglutaric acid obtained naturally by microorganisms.
- Restoration of the intestinal microbial balance.
- Supplementing the diet with bioactive postbiotics of probiotic bacteria.
- Comprehensive support in weakened body's states.

INGREDIENTS:

A set of live and active strains of probiotic bacteria in a liquid form (min. 1×10^8 cfu/ml), alpha-ketoglutaric acid obtained naturally by microorganisms (0.75%). A product was produced in a cascade fermentation process of live and active probiotic bacteria, including: *Lactobacillus rhamnosus* GG (ATCC 53103), *L. rhamnosus* LR 04 (DSM 16605), *L. rhamnosus* ATB-LRS905 (LMG 25626), *L. acidophilus* LA 02 (DSM 21717), *L. plantarum* LP 09 (DSM 25710), *L. plantarum* ATB-LPM907 (LMG 26655), *L. paracasei* LPC 00 (LMG P-21380), *Bifidobacterium breve* BR 03 (DSM 16604), *B. breve* ATB-BBE804 (LMG 13208), *B. animalis* ssp. *lactis* BS 01 (LMG P-21384), *B. longum* ATB-BLM802 (LMG 26652), *Streptococcus thermophilus* FP 4 (DSM 18616).

WHEN TO USE:

- probiotic supplementation
- weakness of the body

RECOMMENDED DAILY INTAKE:

- adults | 15 ml | 2 x times a day with meals
- children >3 years | 5 ml | 3 x times a day with meals

NUTRITIONAL VALUE:

	per 100 ml	per serving 15 ml
energy	82 kJ/19 kcal	19 kJ/3 kcal
fat	0 g	0 g
of which saturated fatty acids	0 g	0 g
carbohydrate	4.2 g	0.6 g
of which sugars	< 0.05 g	0 g
fibre	< 0.5 g	0 g
protein	< 0.5 g	0 g
salt	< 0.01 g	0 g
α-ketoglutaric acid	750 mg	112.5 mg

LOGISTICS PARAMETERS:

AKG PROBIOTIC + AKG	
bottle depth /width /height [mm]	74,5/74,5/162
size in weight [ml]	500
a kind of packet	case
pcs / case	6
case / pallet	200
cases / layer on pallet	25
layer / pallet	8
pallet height [cm]	160

PROBIOTIC WITH α-KETOGLUTARIC ACID

food supplement

Volume: 500 ml

Portions: >7 years - 50 | >3 yrs - 100

Shelf life: 12 months

Consume within 30 days of opening



PURPOSE:

for children with GAPS syndrome

EFFECT:

Recommended in probiotic supplementation for children with GAPS syndrome. It contains extract of raspberries, strawberries and blackcurrant. Used to increase the absorption of vitamins and minerals and to support the function of the nervous and immune systems.

BENEFITS:

- 3 billion probiotic bacteria in a daily portion.
- The daily dose provides 225 mg of α-ketoglutaric acid obtained naturally by microorganisms.
- Restoration of the intestinal microbial balance.
- Supplementing the diet with bioactive ingredients contained in the extract of raspberries, strawberries and blackcurrant.
- Comprehensive support for children with GAPS syndrome.

INGREDIENTS:

A set of live and active strains of probiotic bacteria in liquid form (min. 1x10⁸ cfu/ml), extract from fermented plant materials (20%) [including: raspberry fruit (40%), strawberry fruit (30%), black currant fruit (20%), coconut milk (10%)], alpha-ketoglutaric acid obtained naturally by microorganisms (0.75%). A product was produced in a cascade fermentation process of plant components with live, active strains of probiotic bacteria, including: *Lactobacillus rhamnosus* GG (ATCC 53103), *L. acidophilus* LA 02, *L. helveticus* ATB-LHS906 (LMG 26307), *Bifidobacterium animalis* ssp. *lactis* BS 01 (LMG P-21384), *Streptococcus thermophilus* FP 4 (DSM 18616).

WHEN TO USE:

- probiotic supplementation
- GAPS psychological-intestinal syndrome

RECOMMENDED DAILY INTAKE:

- children >7 years | 10 ml | 3 x times a day with meals
- children >3 years | 5 ml | 3 x times a day with meals

NUTRITIONAL VALUE:

	per 100 ml	per serving 10 ml
energy	133 kJ/31 kcal	13 kJ/3 kcal
fat	0.3 g	< 0.05 g
of which saturated fatty acids	0 g	0 g
carbohydrate	6.6 g	0.7 g
of which sugars	< 0.05 g	0 g
fibre	0.3 g	< 0.05 g
protein	0.6 g	0.06 g
salt	0.01 g	0 g
α-ketoglutaric acid	750 mg	75 mg

LOGISTICS PARAMETERS:

AKG PROBIOTIC FOR CHILDREN WITH GAPS	
bottle depth /width /height [mm]	74,5/74,5/162
size in weight [ml]	500
a kind of packet	case
pcs / case	6
case / pallet	200
cases / layer on pallet	25
layer / pallet	8
pallet height [cm]	160

ProbioSport **probiotic prevention and supplementation**

ProbioSport products are intended to be used as part of the daily diet as part of probiotic prophylaxis (probiotic concentrate and drink), as well as in probiotic supplementation (food supplement). Their systematic consumption supports the regeneration of the body exposed to intense physical and mental effort. Probiotics have a strong effect supporting the body's immune system, weakened by increased physical activity, shortening the time of post-workout regeneration. In addition, they regulate the functioning of the digestive tract, preventing the effects of intestinal hypoxia, occurring during exhaustive training and support the absorption of nutrients necessary for intensively working muscles.

PROBIO™
SPORT

A background image showing a microscopic view of various probiotic bacteria, including rod-shaped and spherical forms, rendered in a light, semi-transparent style.

PROBIOSPORT

probiotic drink

Volume: 125 ml

Portions: 1

Shelf life: 12 months

Consume within 48 hours of opening



EFFECT:

Recommended in probiotic prevention for physically active people. It contains extract of wild rose fruits, blackberry leaves, blackcurrant leaves and knotweed herb, which have properties that support the immune system.

BENEFITS:

- 400 million probiotic bacteria in a daily portion.
- Positive effect on the microbiological balance of the intestines.
- Supplementing the diet with bioactive ingredients contained in the extract of wild rose fruits, blackberry leaves, blackcurrant leaves and knotweed herb.
- Support the regeneration of the body during excessive physical and mental exertion.
- Convenient packaging, a concentrated daily portion of a ready-to-drink beverage that does not require portioning or dilution.

INGREDIENTS:

Water, apple juice (20%), extract from fermented herbal plants and fruits (8%) [including: wild rose fruits (25%), blackberry leaves (25%), blackcurrant leaves (25%), knotweed herb (25%)], a set of live and active strains of probiotic bacteria (min. 3.2×10^6 cfu/ml). A product was produced in a cascade fermentation process of plant components with live, active strains of probiotic bacteria, including: *Lactobacillus rhamnosus* GG, *L. rhamnosus* LR 06, *L. acidophilus* LA 02, *L. casei* LC 03, *L. plantarum* LP 09, *L. pentosus* LPS 01, *L. reuteri* LRE 02, *L. paracasei* LPC 00, *Bifidobacterium breve* BR 03, *B. animalis* ssp. *lactis* BS 01, *B. bifidum* BB 01, *B. longum* BL 03, *B. longum* W 11, *Streptococcus thermophilus* FP 4.

WHEN TO USE:

- probiotic prevention
- physical effort
- stress

RECOMMENDED DAILY INTAKE:

- adults | 125 ml | for the main meal

NUTRITIONAL VALUE:

	per 100 ml	per serving 125 ml
energy	36 kJ/8 kcal	45 kJ/10 kcal
fat	0 g	0 g
of which saturated fatty acids	0 g	0 g
carbohydrate	2.1 g	2.6 g
of which sugars	0 g	0 g
fibre	0 g	0 g
protein	0 g	0 g
salt	0.02 g	0.03 g

LOGISTICS PARAMETERS:

PROBIOSPORT PROBIOTIC DRINK	
bottle depth /width /height [mm]	45/45/127
size in weight [ml]	125
a kind of packet	case
pcs / case	6
case / pallet	803
cases / layer on pallet	73
layer / pallet	11
pallet height [cm]	160

PROBIOSPORT

concentrate of probiotic drink

Volume: 500 ml

Portions: 50

Shelf life: 12 months

Consume within 30 days of opening



EFFECT:

Recommended in probiotic prevention for physically active people. It contains extract of wild rose fruits, blackberry leaves, blackcurrant leaves and knotweed herb, which have properties that support the immune system.

BENEFITS:

- 600 million probiotic bacteria in a daily portion.
- Positive effect on the microbiological balance of the intestines.
- Supplementing the diet with bioactive ingredients contained in the extract of wild rose fruits, blackberry leaves, blackcurrant leaves and knotweed herb.
- Support the regeneration of the body during excessive physical and mental exertion.
- Convenient dosage, daily portion concentrated in a small amount of liquid.

INGREDIENTS:

A set of live and active strains of probiotic bacteria in liquid form (min. 2×10^7 cfu/ml), extract from fermented herbal plants and fruits (20%) [including: wild rose fruits (25%), blackberry leaves (25%), blackcurrant leaves (25%), knotweed herb (25%)]. The concentrate contains live and active strains of probiotic bacteria (min. 2×10^7 cfu/ml). A product was produced in a cascade fermentation process of plant components with live, active strains of probiotic bacteria, including: *Lactobacillus rhamnosus* GG, *L. rhamnosus* LR 06, *L. acidophilus* LA 02, *L. casei* LC 03, *L. plantarum* LP 09, *L. pentosus* LPS 01, *L. reuteri* LRE 02, *L. paracasei* LPC 00, *Bifidobacterium breve* BR 03, *B. animalis* ssp. *lactis* BS 01, *B. bifidum* BB 01, *B. longum* BL 03, *B. longum* W 11, *Streptococcus thermophilus* FP 4.

WHEN TO USE:

- probiotic prevention
- physical effort
- stress

RECOMMENDED DAILY INTAKE:

- adults | 10 - 15 ml | 3 x times a day with meals

NUTRITIONAL VALUE:

	per 100 ml	per serving 10 ml
energy	82 kJ/19 kcal	8 kJ/2 kcal
fat	0 g	0 g
of which saturated fatty acids	0 g	0 g
carbohydrate	4,2 g	< 0,5 g
of which sugars	< 0,5 g	0 g
fibre	< 0,5 g	0 g
protein	< 0,5 g	0 g
salt	< 0,01 g	0 g

LOGISTICS PARAMETERS:

PROBIOSPORT CONCENTRATE	
bottle depth /width /height [mm]	78,5/78,5/155
size in weight [ml]	500
a kind of packet	case
pcs / case	6
case / pallet	225
cases / layer on pallet	25
layer / pallet	9
pallet height [cm]	160

PROBIOSPORT

food supplement

Volume: 500 ml

Portions: 50

Shelf life: 12 months

Consume within 30 days of opening



EFFECT:

Recommended for use in probiotic supplementation, it shows an activity supporting the body's immune system, weakened by increased physical activity, shortening the time of post-workout regeneration. Dedicated to people exposed to increased physical and mental effort.

BENEFITS:

- 1.8 billion probiotic bacteria in a daily portion.
- Restoration of the intestinal microbial balance.
- Supplementing bioactive postbiotics of probiotic bacteria.
- Protection against the negative effects of excessive physical and mental strain.

INGREDIENTS:

A set of live and active strains of probiotic bacteria in liquid form (min. 6×10^7 cfu/ml). A product was produced in a cascade fermentation process of live and active probiotic bacteria, including: *Lactobacillus rhamnosus* GG (ATCC 53103), *L. rhamnosus* LR 06 (DSM 21981), *L. acidophilus* LA 02 (DSM 21717), *L. casei* LC 03 (DSM 27537), *L. plantarum* LP 09 (DSM 25710), *L. pentosus* LPS 01 (LMG P-21019), *L. reuteri* LRE 02 (DSM 23878), *L. paracasei* LPC 00 (LMG P-21380), *Bifidobacterium breve* BR 03 (DSM 16604), *B. animalis* ssp. *lactis* BS 01 (LMG P-21384), *B. bifidum* BB 01 (DSM 22892), *B. longum* BL 03 (DSM 16603), *B. longum* W 11 (LMG P-21586), *Streptococcus thermophilus* FP 4 (DSM 18616).

WHEN TO USE:

- probiotic supplementation
- physical effort
- antibiotic therapy
- dysbiosis
- stress

RECOMMENDED DAILY INTAKE:

- adults | 10 - 15 ml | 3 x times a day with meals

NUTRITIONAL VALUE:

	per 100 ml	per serving 10 ml
energy	82 kJ/19 kcal	8 kJ/2 kcal
fat	0 g	0 g
of which saturated fatty acids	0 g	0 g
carbohydrate	4,2 g	< 0,5 g
of which sugars	< 0,5 g	0 g
fibre	< 0,5 g	0 g
protein	< 0,5 g	0 g
salt	< 0,01 g	0 g

LOGISTICS PARAMETERS:

PROBIOSPORT PROBIOTIC	
bottle depth /width /height [mm]	74,5/74,5/162
size in weight [ml]	500
a kind of packet	case
pcs / case	6
case / pallet	200
cases / layer on pallet	25
layer / pallet	8
pallet height [cm]	160

Jędrzej's Herbs Probiotic supplementation

Herbs and natural plant materials have always taken a special place in human nutrition. From the earliest times, they have been used in traditional folk medicine as an inseparable element of health prophylaxis, and now they are widely used as ingredients in food, cosmetics and medicines. The valuable properties of herbs and plant materials result from their numerous natural compounds with bioactive properties, including vitamins and minerals, essential oils, phenols, glycosides, saponins and carotenoids necessary for the proper functioning of the body.

Jędrzej's Herbs are food supplements in a liquid form. They contain 100% of fermentation extract of ecological plant materials appropriately developed for the indicated group of consumers. They combine the power of herbs, beneficial bacteria and their beneficial postbiotics.



ECO Probiotic plant extract Jedrzej's Herbs

food supplement

Volume: 500 ml

Portions: 50

Shelf life: 12 months

Consume within 30 days of opening



TASTE:

Forest fruits

EFFECT:

Extract of fermented plant ingredients, including blackberries, blackcurrants and wild strawberries with attributed beneficial properties to support the immune system, used in periods of increased morbidity, enriched with a set of live, active strains of probiotic bacteria in liquid form.

BENEFITS:

- 600 million probiotic bacteria in a daily portion.
- Supplementing the diet with bioactive ingredients contained in the extract of blackberries, blackcurrant and wild strawberries.
- Positive effect on the microbiological balance of the intestines.
- Convenient dosage, daily portion concentrated in a small amount of liquid.

INGREDIENTS:

Extract of fermented herbal plants and fruits (100%) [including: blackberry leaves (13.9%), blackcurrant leaves (13.9%), rockrose herb (13.9%), wild rose fruits (13.9%), blackcurrant fruit (13.9%), blackberry fruit (13.9%), wild strawberry leaves (8.3%), horsetail herb (8.3%), a set of live and active bacterial strains probiotics in liquid form (2×10^7 cfu/ml)]. A product was produced in a cascade fermentation process of plant components with live, active strains of probiotic bacteria, including: *Lactobacillus rhamnosus* GG, *L. rhamnosus* LR 04, *L. rhamnosus* LR 05, *L. acidophilus* LA 1, *L. delbrueckii* ssp. *bulgaricus* LB 2, *L. casei* 101/37, *L. plantarum* LP 02, *L. plantarum* LP 01, *L. fermentum* LF2, *Bifidobacterium breve* BL 10, *B. breve* Bbr 8, *B. longum* BL 03, *B. animalis* ssp. *lactis* Bi, *Streptococcus thermophilus* Z 57, *S. thermophilus* 9 Y.

WHEN TO USE:

- probiotic supplementation
- lowered immunity

RECOMMENDED DAILY INTAKE:

- adults | 10 - 15 ml | 3 x times a day with meals
- children >3 years | 5 ml | 3 x times a day with meals

NUTRITIONAL VALUE:

	per 100 ml	per serving 10 ml
energy	239 kJ/57 kcal	25 kJ/6 kcal
fat	0 g	0 g
of which saturated fatty acids	0 g	0 g
carbohydrate	12 g	< 1.5 g
of which sugars	< 1.5 g	0 g
fibre	< 1.5 g	0 g
protein	< 1.5 g	0 g
salt	0.03 g	0 g

LOGISTICS PARAMETERS:

JĘDRZEJ'S HERBS FOREST FRUITS	
bottle depth /width /height [mm]	74,5/74,5/162
size in weight [ml]	500
a kind of packet	case
pcs / case	6
case / pallet	200
cases / layer on pallet	25
layer / pallet	8
pallet height [cm]	160

ECO Probiotic plant extract Jędrzej's Herbs

food supplement

Volume: 500 ml

Portions: 50

Shelf life: 12 months

Consume within 30 days of opening



TASTE:

Hawthorn

EFFECT:

Extract from fermented plant ingredients with a dominance of hawthorn, with attributed beneficial properties on the circulatory system, used for prophylactic purposes, enriched with a set of live, active strains of probiotic bacteria in liquid form.

BENEFITS:

- 600 million probiotic bacteria in a daily portion.
- Supplementing the diet with bioactive components contained in the hawthorn extract.
- Positive effect on the microbiological balance of the intestines.
- Convenient dosage, daily portion concentrated in a small amount of liquid.

INGREDIENTS:

Extract from fermented herbal plants and fruits (100%) [including: hawthorn fruits (23.3%), hawthorn flowers (20%), lemon balm leaves (16.7%), St. John's wort herb (16.7%), linden flowers (13.3%), horsetail herb (10%), a set of live and active strains of probiotic bacteria in a liquid form (min. 2×10^7 cfu/ml)]. A product was produced in a cascade fermentation process of plant components with live, active strains of probiotic bacteria, including: *Lactobacillus rhamnosus* GG, *L. rhamnosus* LR 04, *L. rhamnosus* LR 05, *L. acidophilus* LA 1, *L. delbrueckii* ssp. *bulgaricus* LB 2, *L. casei* 101/37, *L. plantarum* LP 02, *L. plantarum* LP 01, *L. fermentum* LF2, *Bifidobacterium breve* BL 10, *B. breve* Bbr 8, *B. longum* BL 03, *B. animalis* ssp. *lactis* Bi, *Streptococcus thermophilus* Z 57, *S. thermophilus* 9 Y.

WHEN TO USE:

- probiotic supplementation
- protection of the blood system

RECOMMENDED DAILY INTAKE:

- adults | 10 - 15 ml | 3 x times a day with meals
- children >3 years | 5 ml | 3 x times a day with meals

NUTRITIONAL VALUE:

	per 100 ml	per serving 10 ml
energy	247 kJ/59 kcal	25 kJ/6 kcal
fat	0 g	0 g
of which saturated fatty acids	0 g	0 g
carbohydrate	12 g	< 1.5 g
of which sugars	< 1.5 g	0 g
fibre	< 1.5 g	0 g
protein	< 2.0 g	0 g
salt	0.06 g	0 g

LOGISTICS PARAMETERS:

JĘDRZEJ'S HERBS HAWTHORN	
bottle depth /width /height [mm]	74,5/74,5/162
size in weight [ml]	500
a kind of packet	case
pcs / case	6
case / pallet	200
cases / layer on pallet	25
layer / pallet	8
pallet height [cm]	160

ECO Probiotic plant extract

Jedrzej's Herbs

food supplement

Volume: 500 ml

Portions: 50

Shelf life: 12 months

Consume within 30 days of opening



TASTE:

Topinambur

EFFECT:

Extract of fermented plant ingredients with a dominance of topinambur, with attributed beneficial prebiotic properties, used as an adjunct to maintain the intestinal microbiological balance, enriched with a set of live, active strains of probiotic bacteria in liquid form.

BENEFITS:

- 600 million probiotic bacteria in a daily portion.
- Supplementing the diet with bioactive components contained in the topinambur extract.
- Positive effect on the microbiological balance of the intestines.
- Convenient dosage, daily portion concentrated in a small amount of liquid.

INGREDIENTS:

Extract from fermented vegetable plants (100%) [including: topinambur tubers (60.0%), carrot roots (16.6%), parsnip roots (16.6%), parsley roots and leaves (6.8%), a set of live and active strains of probiotic bacteria in liquid form (min. 2×10^7 cfu/ml)]. A product was produced in a cascade fermentation process of plant components with live, active strains of probiotic bacteria, including: *Lactobacillus rhamnosus* GG, *L. rhamnosus* LR 04, *L. rhamnosus* LR 05, *L. acidophilus* LA 1, *L. delbrueckii* ssp. *bulgaricus* LB 2, *L. casei* 101/37, *L. plantarum* LP 02, *L. plantarum* LP 01, *L. fermentum* LF2, *Bifidobacterium breve* BL 10, *B. breve* Bbr 8, *B. longum* BL 03, *B. animalis* ssp. *lactis* Bi, *Streptococcus thermophilus* Z 57, *S. thermophilus* 9 Y.

WHEN TO USE:

- probiotic supplementation
- digestive tract disorder

RECOMMENDED DAILY INTAKE:

- adults | 10 - 15 ml | 3 x times a day with meals
- children >3 years | 5 ml | 3 x times a day with meals

NUTRITIONAL VALUE:

	per 100 ml	per serving 10 ml
energy	230 kJ/55 kcal	25 kJ/6 kcal
fat	0 g	0 g
of which saturated fatty acids	0 g	0 g
carbohydrate	11.4 g	< 1.5 g
of which sugars	< 1.5 g	0 g
fibre	< 1.5 g	0 g
protein	< 1.5 g	0 g
salt	0.03 g	0 g

LOGISTICS PARAMETERS:

JĘDRZEJ'S HERBS TOPINAMBUR	
bottle depth /width /height [mm]	74,5/74,5/162
size in weight [ml]	500
a kind of packet	case
pcs / case	6
case / pallet	200
cases / layer on pallet	25
layer / pallet	8
pallet height [cm]	160

ECO Probiotic plant extracts Jedrzej's Herbs ProbioBorelio I and ProbioBorelio II

food supplement

Volume: 300 ml + 300 ml (600 ml)

Portions: 40

Shelf life: 12 months

Consume within 30 days of opening

PURPOSE:

support for the treatment of Lyme disease and tick-borne diseases

EFFECT:

A two-component food supplement with a complementary composition contains only natural, ecological ingredients. The composition of herbs and probiotic bacteria has been especially selected to support the treatment of Lyme disease and tick-borne diseases.

BENEFITS:

- 600 million probiotic bacteria in a daily portion.
- 16 plant ingredients: curcuma, ginger, garlic, Siberian ginseng, Angelica archangelica, black pepper, oregano, moringa, vilcacora, rockrose, wild teasel, knotweed, hawthorn, elderberry, field horsetail, devil's claw.
- Selection of herbs according to Buhner's indications.
- Supplementing the diet with bioactive components contained in the probiotic plant extracts ProbioBorelio.
- Positive effect on the microbiological balance of the intestines.
- Convenient dosage, daily portion concentrated in a small amount of liquid.

INGREDIENTS:

ProbioBorelio I

Extract from fermented plant ingredients (100%) [including: curcuma root (33.1%), ginger root (33.1%), clove garlic (14%), Siberian ginseng root (8.2%), Angelica archangelica root (5%), black peppercorns (3.3%), oregano herb (3.3%), a set of live and active strains of probiotic bacteria in a liquid form (min. 2×10^7 cfu/ml)].

ProbioBorelio II

Extract from fermented plant ingredients (100%) [including: moringa herb (36.7%), vilcacora root (12.2%), rockrose herb (7.3%), wild teasel herb (7.3%), knotweed herb (7.3%), hawthorn fruit (7.3%), elderberry flowers (7.3%), field horsetail herb (7.3%), devil's claw root (7.3%), a set of live and active strains of probiotic bacteria in a liquid form (min. 2×10^7 cfu/ml)].

A products were produced in a cascade fermentation process of plant components with live, active probiotic bacteria (each of the products min. 2×10^7 cfu/ml), including: *Lactobacillus rhamnosus* GG, *L. rhamnosus* LR 04, *L. rhamnosus* LR 05, *L. acidophilus* LA 1, *L. delbrueckii* ssp. *bulgaricus* LB 2, *L. casei* 101/37, *L. plantarum* LP 02, *L. plantarum* LP 01, *L. fermentum* LF2, *Bifidobacterium breve* Bl 10, *B. breve* Bbr 8, *B. longum* BL 03, *B. animalis* ssp. *lactis* Bi, *Streptococcus thermophilus* Z 57, *S. thermophilus* 9 Y.



ECO Probiotic plant extracts Jedrzej's Herbs ProbioBorelio I and ProbioBorelio II

food supplement

Volume: 300 ml + 300 ml (600 ml)

Portions: 40

Shelf life: 12 months

Consume within 30 days of opening



WHEN TO USE:

- probiotic supplementation
- Lyme disease and tick-borne diseases

RECOMMENDED DAILY INTAKE:

- adults 15 ml | 2 x times a day (morning and evening) with meals
- ProbioBorelio I should be taken together with ProbioBorelio II – each of the products for 7.5 ml 2 times a day.

NUTRITIONAL VALUE PROBIOBORELIO I:

	per 100 ml	per serving 7.5 ml
energy	72 kJ/17 kcal	5,5 kJ/1.5 kcal
fat	0 g	0 g
of which saturated fatty acids	0 g	0 g
carbohydrate	3.8 g	< 0.5 g
of which sugars	< 0.5 g	0 g
fibre	< 0.5 g	0 g
protein	< 0.5 g	0 g
salt	< 0.01 g	0 g

NUTRITIONAL VALUE PROBIOBORELIO II:

	per 100 ml	per serving 7.5 ml
energy	247 kJ/59 kcal	19 kJ/5 kcal
fat	0 g	0 g
of which saturated fatty acids	0 g	0 g
carbohydrate	12 g	< 1.5 g
of which sugars	< 1.5 g	0 g
fibre	< 1.5 g	0 g
protein	< 2 g	0 g
salt	0.06 g	0 g

NUTRITIONAL VALUE PROBIOBORELIO:

	per 100 ml	per serving 15 ml
energy	319kJ/76 kcal	24,5 kJ/6,5 kcal
fat	0 g	0 g
of which saturated fatty acids	0 g	0 g
carbohydrate	15.8 g	< 1.5 g
of which sugars	< 1.5 g	0 g
fibre	< 1.5 g	0 g
protein	< 2 g	0 g
salt	0.06 g	0 g

LOGISTICS PARAMETERS:

ECO PROBIOTIC PLANT EXTRACTS JEDRZEJ'S HERBS PROBIOBORELIO	
bottle depth /width/height [mm]	65/128/148
size in weight [ml]	600
a kind of packet	case
pcs / case	4
case / pallet	225
cases / layer on pallet	25
layer / pallet	9
pallet height [cm]	160

Living Food probiotic prevention

The Living Food brand is a response to consumer demand for the probiotic products. These are products for probiotic prophylaxis, recommended as part of a daily, balanced diet. Biostarter is a product used for the production of bread and the fermentation of food products. Spelled bran synbiotic is a source of dietary fiber (prebiotic) and probiotic bacteria (probiotic). Recommended to support the growth of intestinal microbiota.



BIOSTARTER

probiotic concentrate

Volume: 30 ml

Portions: 7

Shelf life: 12 months

Consume within 30 days of opening



PURPOSE:

production of bread, fermentation of food products

EFFECT:

It contains live and active strains of probiotic bacteria used to activate fermentation processes of food products and stabilize starter cultures in the production of bread.

BENEFITS:

- Assurance of the right direction of the bread dough fermentation process.
- Stabilization and repeatability of the fermentation process of food products.

INGREDIENTS:

A set of live and active strains of probiotic bacteria in liquid form. A product was produced in a cascade fermentation process of live and active probiotic bacteria, including: *Lactobacillus rhamnosus* GG, *L. rhamnosus* LR 04, *L. rhamnosus* LR 05, *L. acidophilus* LA 1, *L. delbrueckii* ssp. *bulgaricus* LB 2, *L. casei* 101/37, *L. plantarum* LP 02, *L. plantarum* LP 01, *L. fermentum* LF2, *Bifidobacterium breve* BL 10, *B. breve* Bbr 8, *B. longum* BL 03, *B. animalis* ssp. *lactis* Bi 1, *Streptococcus thermophilus* Z 57, *S. thermophilus* 9 Y.

WHEN TO USE:

- production of bread
- fermentation of food products

RECOMMENDED DAILY INTAKE:

- production of bread | about 4 ml for sourdough for 2-2.5 kg of flour

NUTRITIONAL VALUE:

	per 100 ml
energy	82 kJ/19 kcal
fat	0 g
of which saturated fatty acids	0 g
carbohydrate	4.2 g
of which sugars	< 0.5 g
fibre	< 0.5 g
protein	< 0.5 g
salt	< 0.01 g

LOGISTICS PARAMETERS:

BIOSTARTER	
bottle depth /width /height [mm]	35/35/64
size in weight [ml]	30
a kind of packet	case
pcs / case	10
case / pallet	936
cases / layer on pallet	72
layer / pallet	13
pallet height [cm]	100

SYNBIOTYK FROM SPELLED BRAN

Mass: 150g

Portions: 10

Shelf life: 12 months

Consume within 15 days of opening



PURPOSE:

regulation of digestive tract function

EFFECT:

Recommended in the prevention of intestinal microbial imbalances. Contains an extract of fermented plant ingredients. It is a source of dietary fiber (prebiotic) and probiotic bacteria (probiotic). Used to support the growth of the intestinal microbiota.

BENEFITS:

- High content of dietary fiber.
- Restoration of the intestinal microbial balance.
- Supplementing the diet with bioactive ingredients contained in the blackberry and blackcurrant extract.
- Comprehensive support of proper bowel function.

INGREDIENTS:

Fermented **spelled bran** (60%), a set of live and active probiotic bacterial strains in liquid (min. 4×10^7 cfu/ml), sugar cane molasses, extract from fermented herbal plants and fruits [including: blackberry leaf, blackcurrant leaves and wild strawberries, horsetail herb, blackcurrant fruit and blackberries]. A product was produced in a cascade fermentation process of spelled bran and plant components with live, active strains of probiotic bacterial strains including: *Lactobacillus rhamnosus* GG, *L. rhamnosus* LR 04, *L. rhamnosus* LR 05, *L. acidophilus* LA 1, *L. delbrueckii* ssp. *bulgaricus* LB 2, *L. casei* 101/37, *L. plantarum* LP 02, *L. plantarum* LP 01, *L. fermentum* LF2, *Bifidobacterium breve* BL 10, *B. breve* Bbr 8, *B. longum* BL 03, *B. animalis* ssp. *lactis* Bi 1, *Streptococcus thermophilus* Z 57, *S. thermophilus* 9 Y.

WHEN TO USE:

- probiotic prevention

RECOMMENDED DAILY INTAKE:

- 15 g | for the main meal

NUTRITIONAL VALUE:

	per 100 g	per serving 15 g	% NRV*
energy	905 kJ/216 kcal	136 kJ/32 kcal	2%
fat	2.5 g	< 0.5 g	0%
of which saturated fatty acids	0.5 g	< 0.1 g	1%
carbohydrate	29.4 g	4.4 g	2%
of which sugars	2.2 g	< 0.5 g	0%
fibre	20 g	3 g	-
protein	9 g	1.4 g	3%
salt	0.02 g	0 g	0%

* NRV – Nutrient Reference Value for an average adult (8400 kJ/2000 kcal).

LOGISTICS PARAMETERS:

EAN SYNBIOTYK	5901549746129
bottle depth /width /height [mm]	80/80/94,5
size in weight [mg]	150
a kind of packet	case
pcs / case	6
case / pallet	375
cases / layer on pallet	25
layer / pallet	15
pallet height [cm]	160

The AqquChill brand is a sparkling probiotic drink

The offer includes 2 probiotic products - the sparkling probiotic drink **ProbioCola** and the sparkling probiotic drink **ProbioLime**. The products have been developed with the modern consumer in mind, aware of their choices and looking for natural substitutes for traditional products.

The AqquChill brand is the only series of sparkling probiotic drinks on the Polish market that combines pleasure with useful. It's a tasty and on point alternative to sugar-sweetened and artificially colored carbonated drinks. **It combines the hydration of the body with a dose of probiotic bacteria. At the same time, it gives „chill” and comprehensive support to the body.**

Each element of the product has been selected with a view to: supplementing the contemporary human microbiome, strained by everyday struggles, and providing extraordinary taste sensations.



AqquChill™

The logo for AqquChill™ is written in a black, cursive-style font. The letters are connected and have a fluid, handwritten appearance. The trademark symbol (TM) is positioned at the top right of the word. The background of the slide features a faint, light-colored illustration of various probiotic bacteria, including rod-shaped and spherical forms, scattered across the lower half.

ProbioCola

sparkling probiotic drink

Volume: 330 ml

Portion: 1

Shelf life: 12 months

Consume within 12 hours of opening



EFFECT:

Sparkling probiotic drink ProbioCola is a product containing ingredients of natural origin, without the addition of sugar. Thanks to carbon dioxide and natural cola aroma allows for an extraordinary taste sensation, and at the same time provides a portion of live and active probiotic bacteria.

BENEFITS:

- 400 million probiotic bacteria in a daily portion.
- Positive effect on the microbiological balance of the intestines.
- Simultaneous hydration of the body with a portion of probiotic bacteria.
- 0% sugar.
- Extraordinary taste sensations.
- Convenient intake, daily dose ready to drink – does not require dilution or portioning.

INGREDIENTS:

Revitalized water (67.67%), a set of live and active strains of probiotic bacteria in liquid form (400 million probiotic bacteria in 330 ml), carbon dioxide, inulin (0.16%), aroma (0.15%), food grade salt (0.01%), sweetener: steviol glycosides RA98% (0.01%). The product is produced in a cascade fermentation of live, active strains of probiotic bacteria including: *Lactobacillus rhamnosus* GG, *L. rhamnosus* LR 04, *L. rhamnosus* LR 05, *L. acidophilus* LA 1, *L. delbrueckii* ssp. *bulgaricus* LB 2, *L. casei* 101/37, *L. plantarum* LP 02, *L. plantarum* LP 01, *L. fermentum* LF2, *Bifidobacterium breve* BL 10, *B. breve* Bbr 8, *B. longum* BL 03, *B. animalis* ssp. *lactis* Bi 1, *Streptococcus thermophilus* Z 57, *S. thermophilus* 9 Y.

WHEN TO USE:

- probiotic supplementation

RECOMMENDED DAILY INTAKE:

- adults 330 ml | with meals

NUTRITIONAL VALUE:

	per 100 ml	per serving 330 ml
energy	36 kJ/8 kcal	119 kJ/26 kcal
fat	0 g	0 g
of which saturated fatty acids	0 g	0 g
carbohydrate	2.1 g	6.9 g
of which sugars	0 g	0 g
fibre	0 g	0 g
protein	0 g	0 g
salt	0.02 g	0.07 g

LOGISTICS PARAMETERS:

PROBIOCOLA	
bottle depth /width/height [mm]	60/60/185
size in weight [mg]	330
a kind of packet	case
pcs / case	6
case / pallet	344
cases / layer on pallet	43
layer / pallet	8
pallet height [cm]	160

ProbioLime

sparkling probiotic drink

Volume: 330 ml

Portion: 1

Shelf life: 12 months

Consume within 12 hours of opening



EFFECT:

Sparkling probiotic drink ProbioLime is a product containing ingredients of natural origin, without the addition of sugar. Thanks to carbon dioxide, an extract of fermented, ecological plant ingredients of lemon and lime, and a natural aroma, it allows for an extraordinary taste experience, and at the same time provides a portion of live and active probiotic bacteria.

BENEFITS:

- 400 million probiotic bacteria in a daily portion.
- Positive effect on the microbiological balance of the intestines.
- Simultaneous hydration of the body with a portion of probiotic bacteria.
- 0% sugar.
- Extraordinary taste sensations.
- Convenient intake, daily dose ready to drink – does not require dilution or portioning.

INGREDIENTS:

Revitalized water (67.7%), a set of live and active strains of probiotic bacteria in liquid form (400 million probiotic bacteria in 330 ml), lemon (0.2%), lime (0.13%), carbon dioxide, inulin (0.16%), aroma (0.05%), food grade salt (0.04%), sweetener: steviol glycosides RA98% (0.02%). The product is produced in a cascade fermentation of live, active strains of probiotic bacteria including: *Lactobacillus rhamnosus* GG, *L. rhamnosus* LR 04, *L. rhamnosus* LR 05, *L. acidophilus* LA 1, *L. delbrueckii* ssp. *bulgaricus* LB 2, *L. casei* 101/37, *L. plantarum* LP 02, *L. plantarum* LP 01, *L. fermentum* LF2, *Bifidobacterium breve* BL 10, *B. breve* Bbr 8, *B. longum* BL 03, *B. animalis* ssp. *lactis* Bi 1, *Streptococcus thermophilus* Z 57, *S. thermophilus* 9 Y.

WHEN TO USE:

- probiotic supplementation

RECOMMENDED DAILY INTAKE:

- adults 330 ml | with meals

NUTRITIONAL VALUE:

	per 100 ml	per serving 330 ml
energy	29 kJ/7 kcal	96 kJ/23 kcal
fat	0 g	0 g
of which saturated fatty acids	0 g	0 g
carbohydrate	1.7 g	5.6 g
of which sugars	0 g	0 g
fibre	0 g	0 g
protein	0 g	0 g
salt	0.02 g	0.07 g

LOGISTICS PARAMETERS:

PROBIOLIME	
bottle depth /width /height [mm]	60/60/185
size in weight [mg]	330
a kind of packet	case
pcs / case	6
case / pallet	344
cases / layer on pallet	43
layer / pallet	8
pallet height [cm]	160

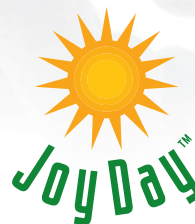
Sets of probiotics – idea for unique gifts

The offer includes 3 gift sets:

- A set of probiotics for a **SPECIAL WOMAN**
- A set of probiotics for a **SPECIAL MAN**
- A set of probiotics for a **SENIOR**

The varied offer allows you to choose a gift for any occasion, regardless of whether you want to give a woman, a man or an elderly person. Sets of probiotics will be a perfect gift and will bring a smile of gratitude and satisfaction to the person you are gifting.

Each of us deserves a little pleasure, and our probiotic gift sets make everyone feel special.



Sets of probiotics



A set of probiotics for a **SPECIAL WOMAN**

consists of:

1. ECO Probiotic Joy Day
2. ECO Probiotic herbal extract Herbeauty Joy Day HORSETAIL & KNOTWEED



A set of probiotics for a **SPECIAL MAN**

consists of:

1. ECO Food supplement ProBioSport
2. ECO Probiotic Joy Day CURCUMA, GINGER, PEPPER



A set of probiotics for a **SENIOR**

consists of:

1. ECO Probiotic plant extract Jędrzej's Herbs HAWTHORN
2. ECO Probiotic plant extract Jędrzej's Herbs FOREST FRUITS

A set of probiotics for a **SPECIAL WOMAN**

A set of probiotics FOR SPECIAL WOMAN is the perfect gift idea for Women's Day, Mother's Day, birthday, name day and a gift for every woman who appreciates beauty, health and natural products.

This unique combination of probiotics has a positive effect on maintaining the proper condition of the skin, hair and nails, and supports the proper functioning of the digestive and immune systems.

A set of probiotics for a **SPECIAL MAN**

A set of probiotics FOR A SPECIAL MAN is the perfect gift idea for Boyfriend's Day, Father's Day, birthday, name day and a gift for every man who appreciates masculinity, health and natural products.

This unique combination of probiotics has a positive effect on the regeneration of the body after excessive physical and mental effort, stabilizes the digestive tract and supports the immune system.

A set of probiotics for a **SENIOR**

A set of probiotics FOR SENIORS is a perfect gift idea on the occasion of Grandma's and Grandpa's Day, Mother's Day, Father's Day, Women's Day, birthday, name day and a gift for every senior who appreciates health and natural products.

This unique combination of probiotics supports the proper functioning of the digestive, circulatory and immune systems.



LOGISTICS PARAMETERS:

SET FOR WOMAN / MAN / SENIOR	
bottle depth /width /height [mm]	83/171/166
size in weight [mg]	1000
a kind of packet	case
pcs / case	1
case / pallet	504
cases / layer on pallet	63
layer / pallet	8
pallet height [cm]	140

Living Food **probiotic prevention and probiotic supplementation**

Living Food Sp. z o.o. meets the expectations of consumers in the range of probiotic products, constantly developing it. Over ten years of our experience in the production of liquid probiotic products has resulted in a full range of unique preparations that serve people interested in probiotic prevention and supplementation.

Living food™

A background image showing a dense field of various probiotic bacteria, including rod-shaped and spherical forms, rendered in a light, semi-transparent style.

Who are our products for?

Living Food products are intended for adults, seniors, youth and children over 3 years. They can be consumed by diabetics, people with lactose intolerance and gluten-free diet.



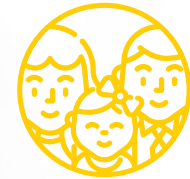
CHILDREN



SENIORS



PHYSICALLY ACTIVE



EVERYONE

Our products have numerous awards and certificates, including:

- Consumer Laurel 2020 in the category „Natural preparations supporting immunity for adults”
- POLISH QUALITY AWARD awarded by the Polish Chamber of Commerce
- STATUETTE „Przyjaciel Fundacji” (Foundation’s Friend) of the Cardiac Surgery Development Foundation prof. Zbigniew Religa
- Title and award „Orzeł Agrobiznesu 2018” (Agribusiness Eagle 2018) for market success granted by EMS Promotion and Publishing Agency
- The Polish Innovation Award 2018 awarded by the Polish Entrepreneurship Agency
- First degree distinction in the 16th edition of the „Wielkopolska Nagroda Jakości” (Wielkopolska Quality Award) competition for the implementation of the quality management concept
- Certificate of the nationwide Promotion Programme “Doceń Polskie” (Appreciate Polish)
- Certificate awarded by the Wielkopolska Institute of Quality for the improvement of our products in the scope of quality within the project “Creation and implementation of pro-innovative optimization services for SMEs based on an integrated expert system”
- Certificate awarded for the first place in the competition of food products “Nasze Dobre Lubuskie” (Our Good Lubuskie)
- Cardiac Surgery Development Foundation prof. Zbigniew Religa in Zabrze



INGREDIENTS OF LIVING FOOD PRODUCTS

	liquid blend of live and active probiotic bacterial strains ^①	extract from fermented plant ingredients ^②	apple juice	water	α-ketoglutaric acid
PROBIOTIC DRINKS	✓	✓	✓	✓	
PROBIOSIP-SHOT CURCUMA, GINGER, PEPPER PROBIOSIP HORSETAIL & KNOTWEED	✓	✓		✓	
PROBIOTIC DRINK CONCENTRATES	✓	✓			
JEDRZEJ'S HERBS EXTRACTS PROBIOTIC CURCUMA, GINGER, PEPPER PROBIOTIC HORSETAIL & KNOTWEED PROBIOTIC ASHWAGANDHA	✓	✓			
PROBIOTIC PROBIOSPORT PROBIOTIC JOY DAY PROBIOTIC JOY DAY KIDS	✓				
PROBIOTICS WITH AKG FORMULA ^③	✓	✓			✓

① – the products differ in a blend of strains

② – the products differ in the composition of plant extracts

③ – Probiotic+AKG does not contain plant extracts

PROBIOTIC PREVENTION

PROBIOTIC DRINK

400 million
bacteria in daily intake



CONCENTRATE OF PROBIOTIC DRINK

600 million
bacteria in daily intake



- ① – the products differ in a blend of strains
- ② – the products differ in the composition of plant extracts
- ③ – Probiotic+AKG does not contain plant extracts
- ④ – Probiosip curcuma, ginger, pepper also contains water

PROBIOTIC SUPPLEMENTATION

PROBIOTIC ASHWAGANDHA
PROBIOTIC AND PROBIOSIP CURCUMA, GINGER, PEPPER
PROBIOTIC AND PROBIOSIP HORSETAIL & KNOTWEED
„JĘDRZEJ'S HERBS" EXTRACTS

400 million
600 million
1.2 billion
bacteria in daily intake



water
apple juice
liquid blend of live and active probiotic bacterial strains ①

PROBIOTIC PROBIOSPORT
PROBIOTIC JOY DAY
PROBIOTIC JOY DAY KIDS

900 million
1.8 billion
bacteria in daily intake



extract from fermented plant ingredients ②
 α -ketoglutaric acid

PROBIOTICS WITH ALFA-KETOGLUTARIC ACID

3 billion
bacteria in daily intake



Products of Living Food passion, knowledge and experience

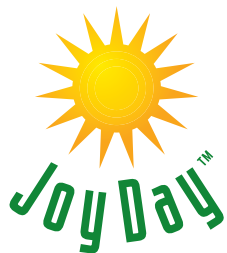
Each of our probiotic products is characterized by unique composition and is created with the recipe that was developed years ago, and is still being improved. From the beginning of our operate we focused not only on the technological process of ours probiotic products. We were primarily interested in the most delicate and at the same time the strongest, and above all the most important element – microorganisms with probiotic potential.

Over the years, following the possibilities of modern science, studying scientific literature, using the increasingly interesting analytical offer available on the market, developing cooperation with the best scientific units in Poland, implementing smaller and larger research and development projects, we have perfected our probiotic products. Constant development is one of our priorities. Research and development is still ongoing and implementation, thanks to which we learn more and more about the positive effect of our preparations on the human body, mainly on its intestinal microbiota.

We have always focused on improving quality, which is understood by us very broadly.

Living food™

Our brands and formulas



Living food™

LIVING FOOD SP. Z O.O.
ul.Graniczna 15
66-320 Trzciel

+48 693 822 235
biuro@living-food.pl
www.living-food.pl